



DONCASTER, VIC
313/65 Stables Circuit

2 BED **2** BATH **1** CAR

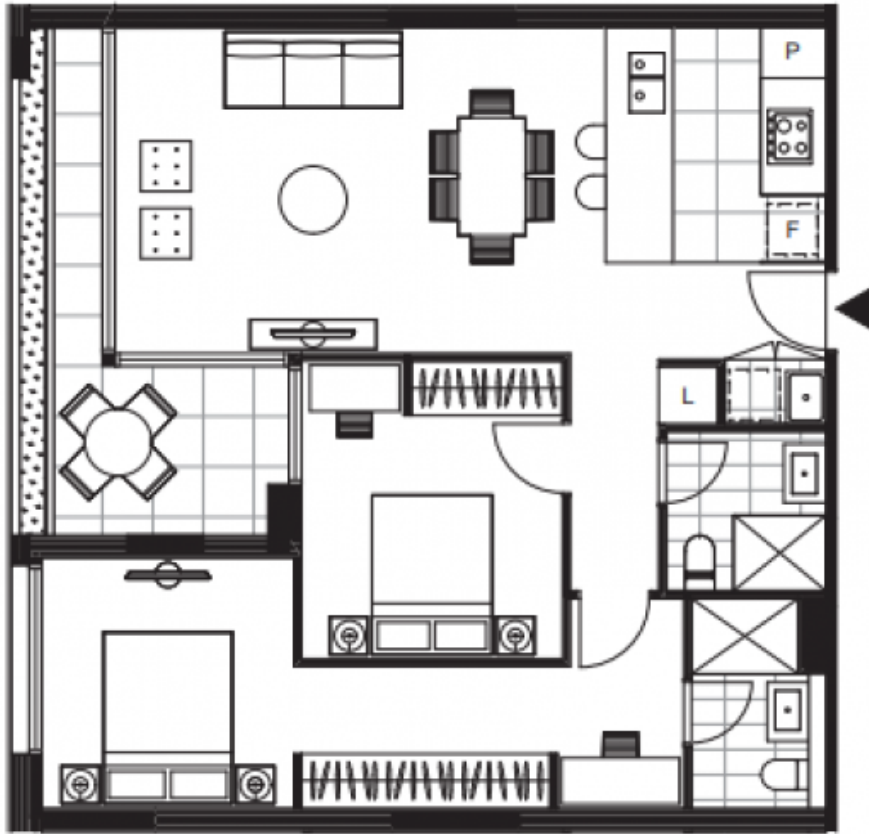


Spacious Phoenix apartment in Mirvac's Tullamore estate

With lush parklands at its doorstep; where style, privacy and timeless design blends with nature, beauty and freedom. Unique, exclusive and limited, this is a lifestyle of distinction.

- Apartment features:
- Bespoke design, quality construction and finishes
 - Large internal space of 82m²
 - Balcony ? 90m² ? overlooking park
 - Storage cage near car space
 - Twin shower upgrade
 - Stainless steel Miele appliances and integrated dishwasher
 - Generous cupboard space

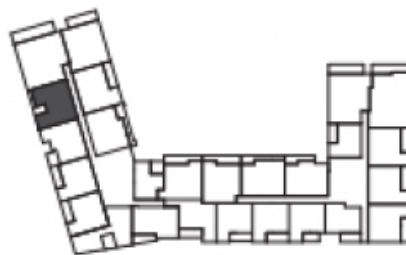
ONLY \$500 per week
Contact: Aleisha Clark
 03 9645 1199
 0491 174 507
Type: Apartment
Date Available: 31/01/2022
Leased Date: 11/02/2022
Bond: \$2172
<https://www.resbymirvac.com>



LEVEL 03

APT 3.13

LOCATION PLAN



APARTMENT TYPE
2 BED, 2 BATH

INTERNAL AREA 82 m²
BALCONY AREA 8 m²

TOTAL AREA 90 m²

Areas subject to final survey, area includes balcony and/or terrace where applicable. It excludes parking and external storage areas.

Plans shown are only indicative of layout. Dimensions are approximate.

DONCASTER, VIC
313/65 Stables Circuit