



## EAST MELBOURNE, VIC

704/296 Victoria Parade

**2** BED **2** BATH **2** CAR 

**\*\* UNDER OFFER \*\* The Eastbourne - 2-bedroom, corner apartment with all the upgrades!**

Eastbourne is an inner-city Eden, a heartbeat from the city, yet feeling like a million miles away. Located in East Melbourne, The Eastbourne has set a new benchmark for luxury living in Melbourne.

**Apartment features:**

- Bespoke design, quality construction and finishes
- Internal space of 107m<sup>2</sup>
- Balcony ? 9m<sup>2</sup>
- X2 Car space
- Storage cage near car space
- Stainless steel Miele appliances, including integrated dishwasher
- Integrated Fisher & Paykel 403L Fridge/Freezer

**Contact agent- 0491 174 507**

**Contact:** Aleiasha Clark  
03 9645 1199  
0491 174 507

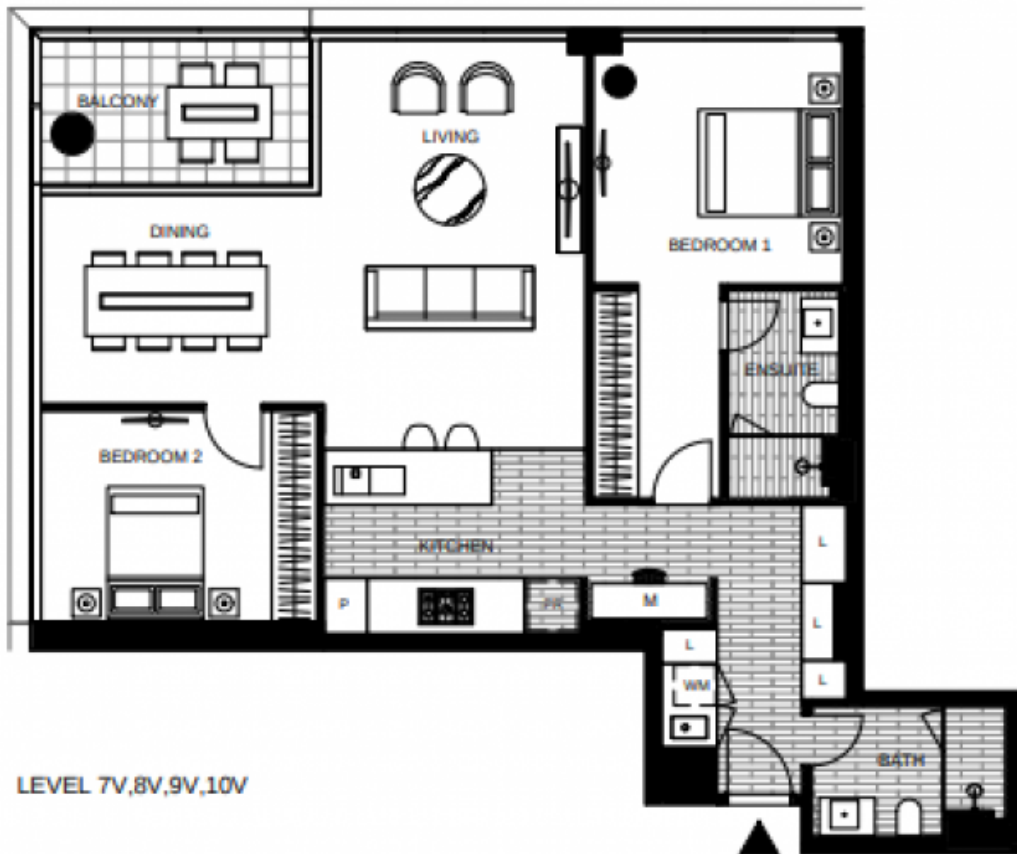
**Type:** Apartment

**Date Available:** 28/02/2022

**Leased Date:** 25/03/2022

**Bond:** \$4779

<https://www.resbymirvac.com>



- APT 7-04V
- APT 8-04V
- APT 9-04V
- APT 10-04V

**LOCATION PLAN**



**APARTMENT  
2 BED 2 BATH + MEDIA**

Internal Area 107m<sup>2</sup>  
 Balcony Area 9m<sup>2</sup>  
 Total Area 116m<sup>2</sup>

Areas subject to final survey, area includes balcony and/or terrace where applicable. It excludes parking and external storage areas.



Plans shown are only indicative of layout. Dimensions are approximate.

**EAST MELBOURNE, VIC**  
 704/296 Victoria Parade