



St Leonards, NSW

2009/486 Pacific Highway

2 BED **2** BATH **1** CAR 

Stunning North Facing 2-Bedroom Apartment in St Leonards Square

This 98sqm, Level 20 apartment features:

- Well appointed bedrooms with floor to ceiling built-in wardrobes
- Bright open-plan living and dining area, with access to balcony
- Modern kitchen with stone benchtop and built-in appliances
- Luxurious bathrooms with plenty of storage
- North facing balcony, perfect for entertaining
- Internal laundry with dryer included
- Secure car space and storage cage provided
- Ducted A/C, video intercom and NBN connectivity
- Resident access to the pool, spa, sauna, steam room and outdoor terrace

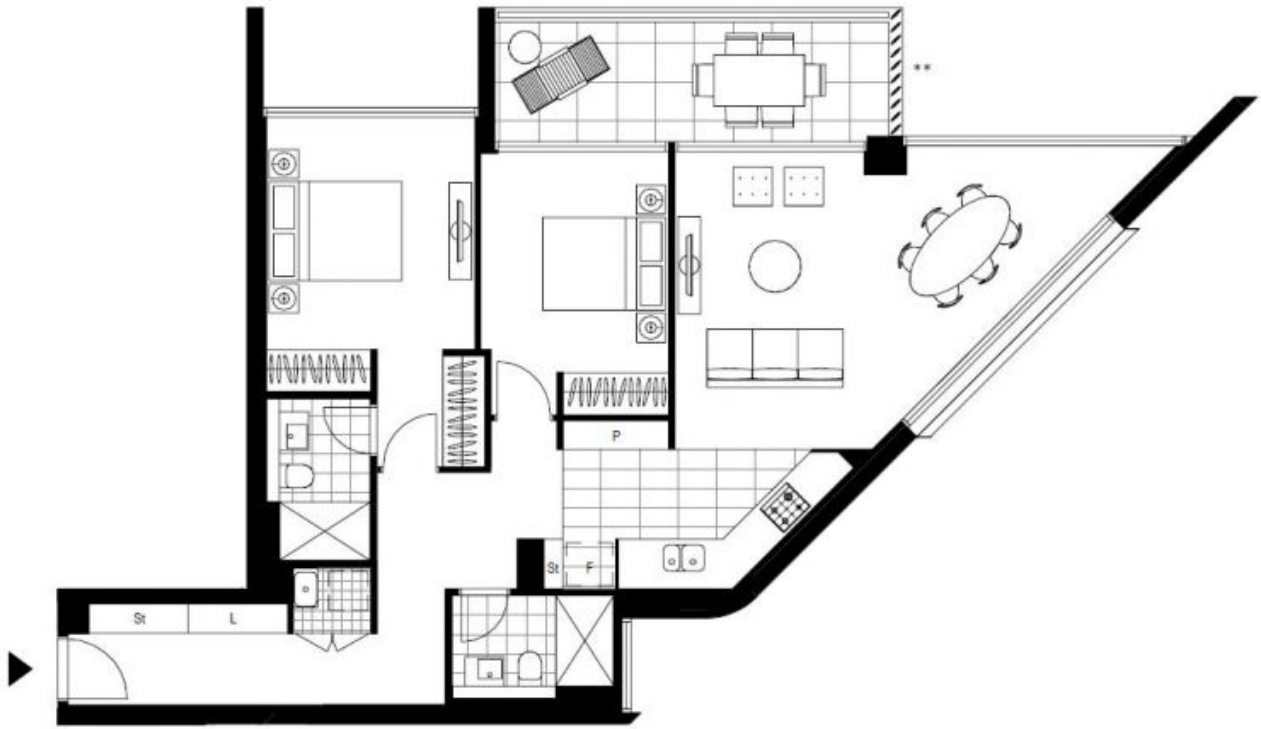
More available

Contact: Christine Howison
02 8588 8888
0459 222 085
Georgia Glynn
02 8588 8888
0481 388 777

Type: Apartment

Date Available: 05/02/2022

<https://www.resbymirvac.com>



Plans shown are only indicative of layout. Dimensions are approximate.

St Leonards, NSW
2009/486 Pacific Highway