

Glebe, NSW

310/19 Minogue Crescent

2
BED

1
BATH

1
CAR



North East Facing 2 Bedroom Apartment with Parking

This 86 sqm, 2-bedroom apartment features:

- Spacious bedrooms with floor-to-ceiling built-in wardrobes
- Functional living and dining area, with access to balcony
- Quality kitchen with stone benchtops and built-in Miele appliances
- Sleek bathrooms with plenty of vanity storage, bath in main bathroom
- North East facing, overlooking the internal gardens
- Internal laundry with a dryer included
- Secure car space and storage cage included
- Ducted A/C, video intercom and NBN connectivity
- 450m to the Heritage-listed retail precinct Tramsheds, walking distance public transport

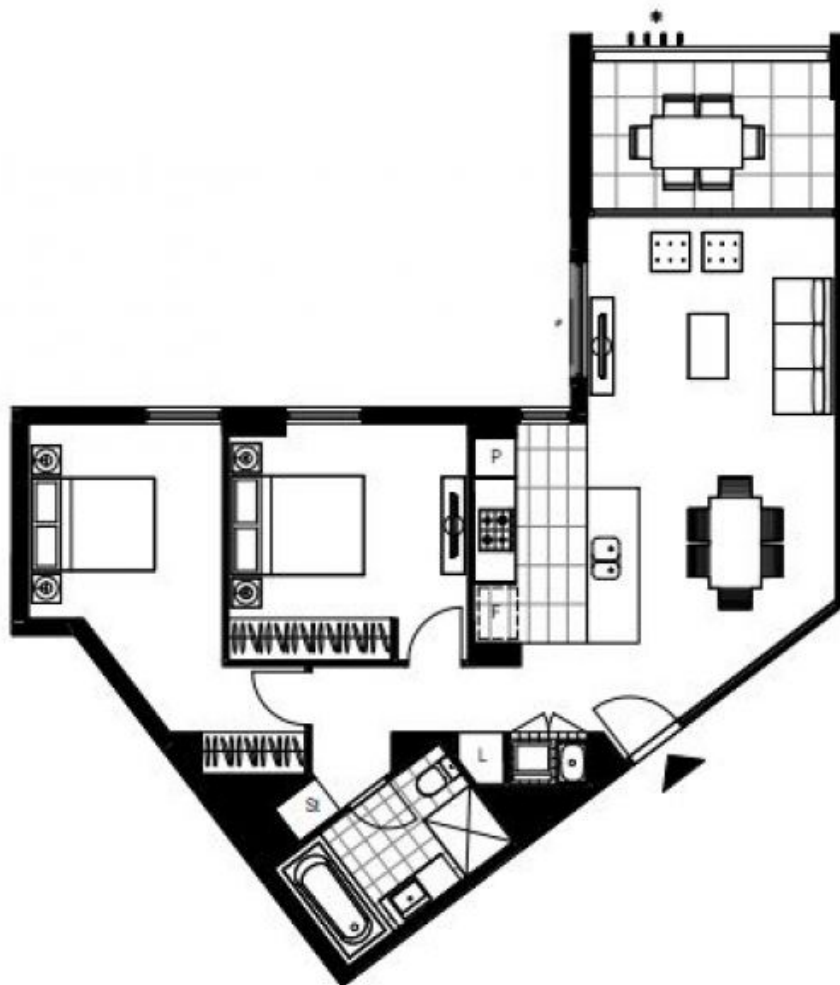
\$725 per week

Contact: Naz Sabzpouri
02 8588 8888
0401 545 440

Type: Apartment

Date Available: 12/02/2022

<https://www.resbymirvac.com>



Plans shown are only indicative of layout. Dimensions are approximate.

Glebe, NSW
310/19 Minogue Crescent