



Glebe, NSW

205/2 Scotsman Street

1 1
BED BATH



Ultramodern Apartment within Harold Park, Glebe

This 2nd floor apartment features:

- Well-appointed bedroom with floor-to-ceiling built-in wardrobes
- Open-plan living and dining area, with access to balcony
- Modern kitchen with stone benchtop and built-in Miele appliances
- Sleek bathroom with plenty of generous vanity storage
- Private balcony, perfect for entertaining
- Internal laundry with washing machine and dryer included
- Ducted A/C, video intercom and NBN connectivity
- 450m to the Heritage-listed retail precinct Tramsheds, walking distance public transport

\$ 460 per week

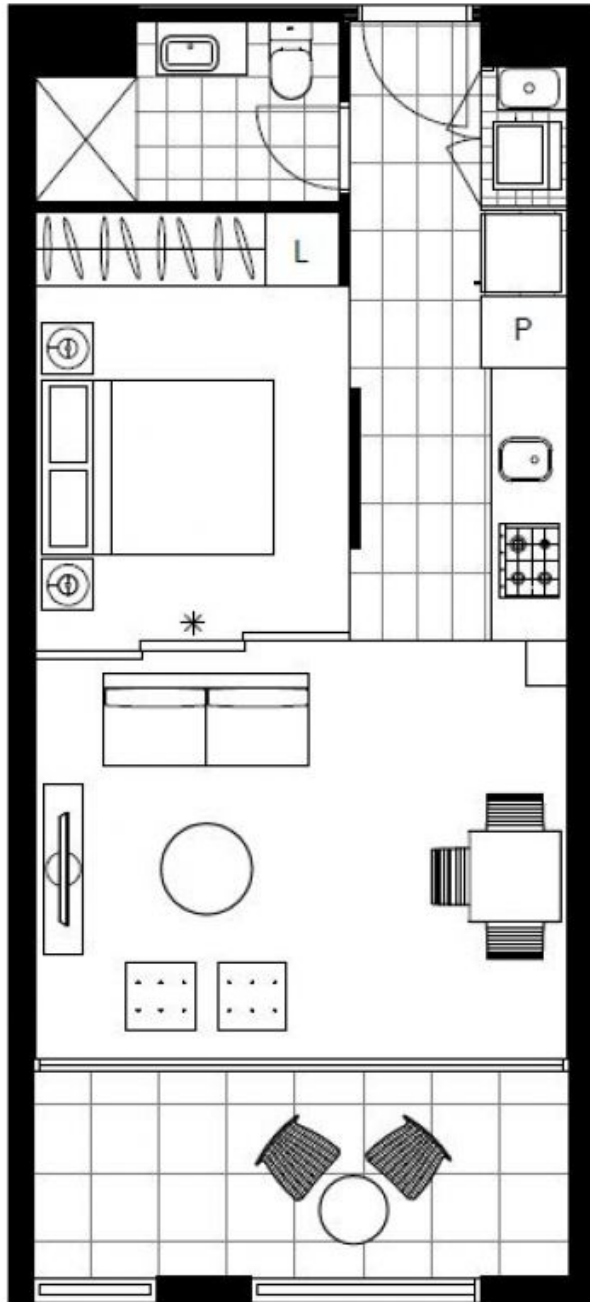
Contact: Naz Sabzpouri
02 8588 8888
0401 545 440

Type: Apartment

Date Available: 10/02/2022

<https://www.resbymirvac.com>

For more information please contact Real Estate Services by Mirvac on 02 8588 8888 or email enquiries@resbymirvac.com - Your Onsite Agent!



Plans shown are only indicative of layout. Dimensions are approximate.

Glebe, NSW
205/2 Scotsman Street