



Sydney Olympic Park, NSW

21511/2 Figtree Drive

2 BED **2** BATH **1** CAR 

Incredible 2-Bedroom Apartment with City Views + Parking in Sydney Olympic Park

This 95sqm, 15th floor apartment features:

- Well-appointed bedrooms with built-in wardrobes
- Spacious living and dining area, great for entertaining
- Sleek kitchen with island stone benchtop and built-in European appliances
- Modern bathrooms with plenty of vanity storage
- Wide balcony with views of Sydney Harbour, access from living and main bed
- Internal laundry with dryer included
- Secure car space and storage cage included
- Ducted A/C, video intercom and NBN connectivity

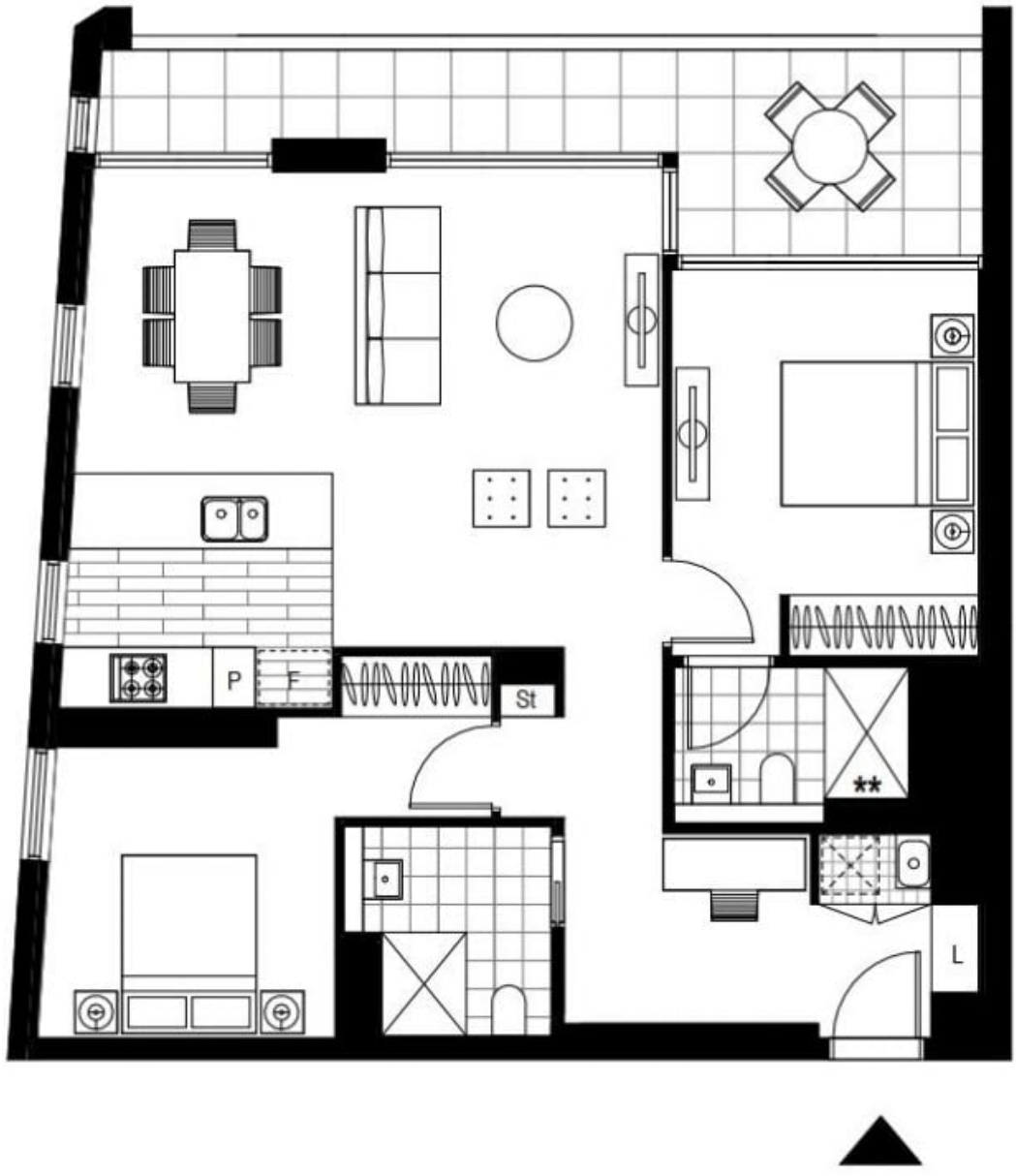
Deposit Taken

Contact: Georgia Glynn
02 8588 8888
0481 388 777
Christine Howison
02 8588 8888
0459 222 085

Type: Apartment

Date Available: 05/02/2022

<https://www.resbymirvac.com>



Plans shown are only indicative of layout. Dimensions are approximate.

Sydney Olympic Park, NSW
21511/2 Figtree Drive