



## St Leonards, NSW

1605/486 Pacific Highway

**2** BED **2** BATH **1** CAR 

### Stunning Harbour-Facing 2 Bedroom Apartment in St Leonards Square

This 89sqm, 16th floor apartment features:

- Well-appointed bedrooms with built-in wardrobes
- Open-plan living and dining area, ideal for entertaining
- Contemporary kitchen with stone benchtop and built-in European appliances
- Stylish bathrooms with plenty of vanity storage, bath in ensuite
- Private balcony, with views of Sydney Harbour
- Internal laundry with dryer included
- Secure car space and storage cage included
- Ducted A/C, video intercom and NBN connectivity
- Resident access to the pool, spa, sauna, steam room, cinema room and outdoor terrace

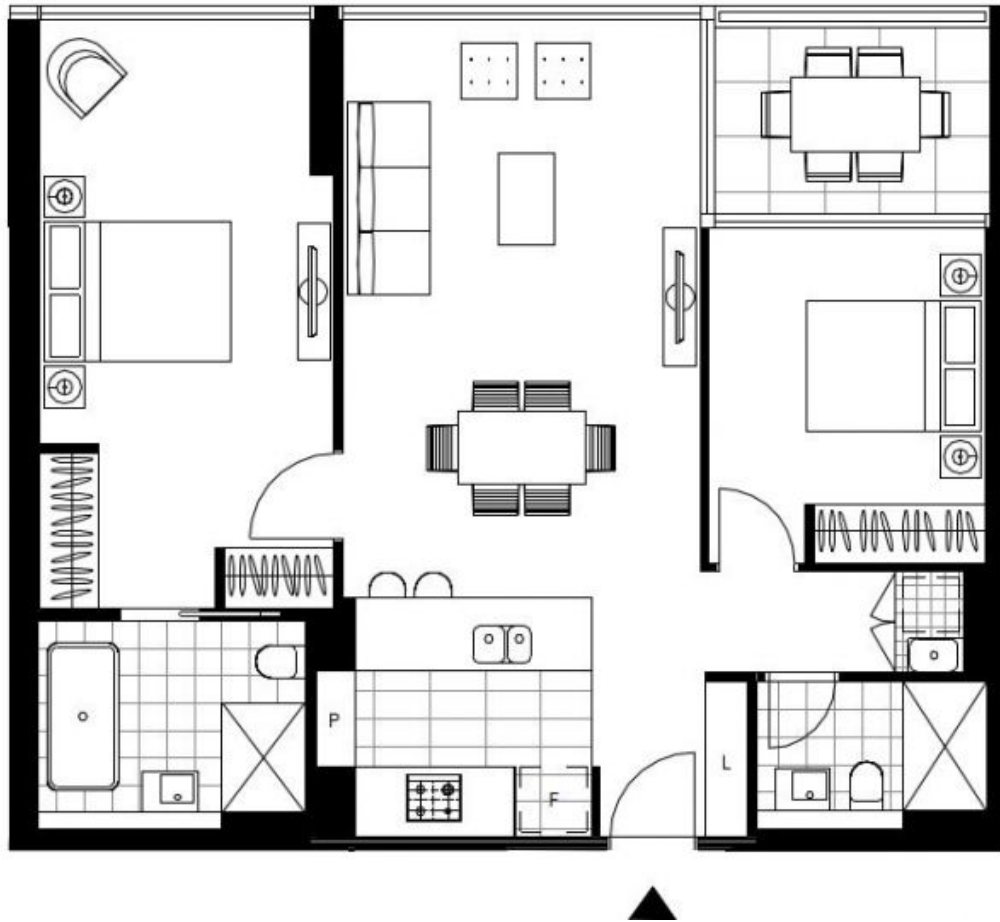
### Deposit Taken

**Contact:** Christine Howison  
02 8588 8888  
0459 222 085  
Georgia Glynn  
02 8588 8888  
0481 388 777

**Type:** Apartment

**Date Available:** 05/02/2022

**<https://www.resbymirvac.com>**



Plans shown are only indicative of layout. Dimensions are approximate.

**St Leonards, NSW**  
1605/486 Pacific Highway