



Glebe, NSW

G12/1A The Crescent

2 BED **2** BATH **1** CAR 

Stylish & Private, 2 Bedroom Apartment in 'Harold Park', Glebe

This 111sqm, ground floor apartment offers;

- Large bedrooms with built-in wardrobes
- Contemporary bathrooms, with bath in main
- Study nook off living room, great for a home office
- Modern stone kitchen with island bench and Miele appliances
- Spacious open living area, flowing onto entertainers courtyard
- Ducted A/C, video intercom and NBN connectivity
- Internal laundry with washing machine and dryer included
- Carspace AND storage cage included
- North-West orientation with leafy outlook
- 200m to the Heritage-listed retail precinct Tramsheds, walking distance to public transport

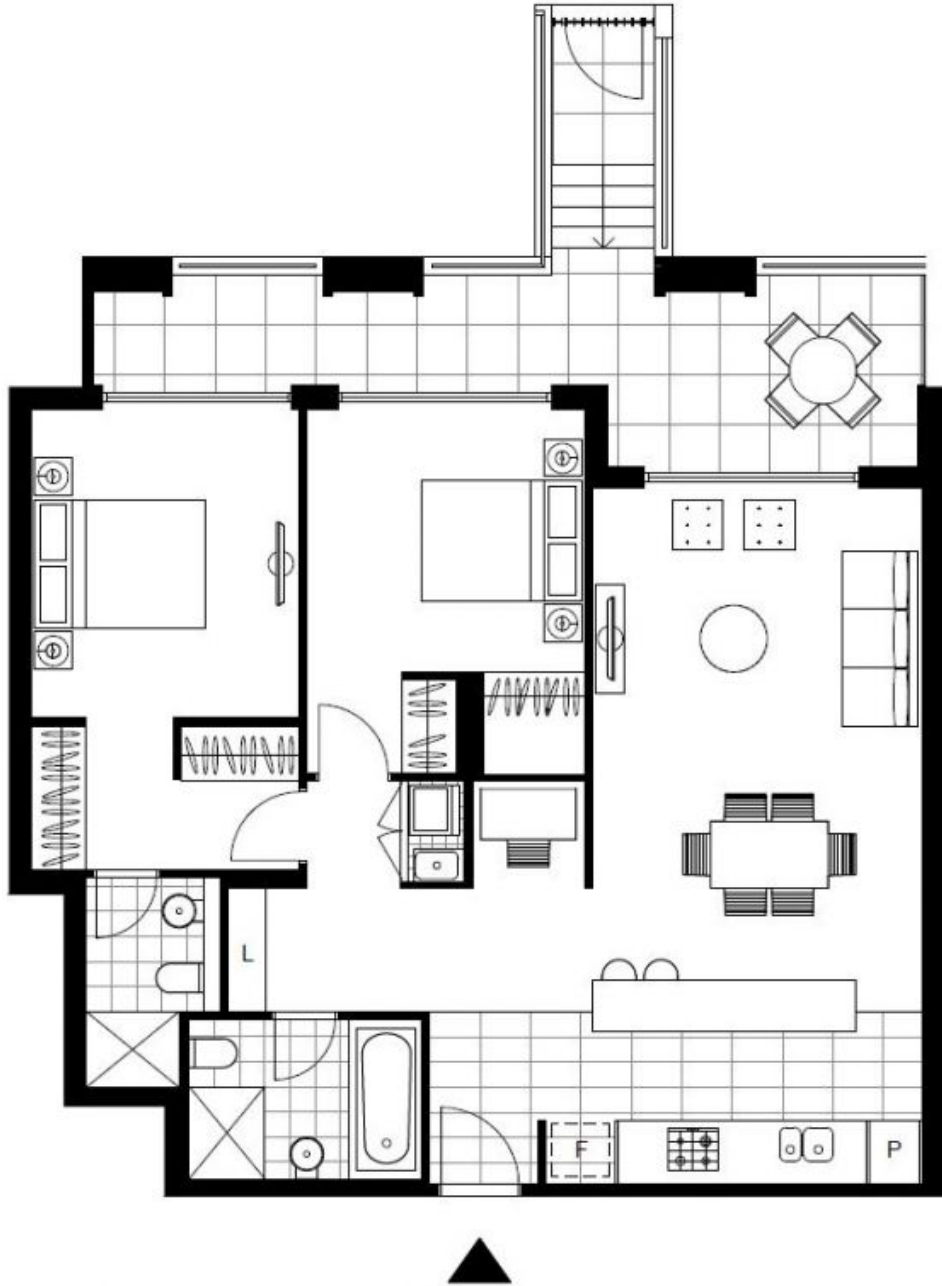
\$900 per week

Contact: Naz Sabzpouri
02 8588 8888
0401 545 440

Type: Apartment

Date Available: 18/01/2022

<https://www.resbymirvac.com>



Plans shown are only indicative of layout. Dimensions are approximate.

Glebe, NSW
G12/1A The Crescent