



**Glebe, NSW**  
805/1 Cullen Close

**3** BED **2** BATH **1** CAR 

### Top-Floor, 3 Bedroom + Study Apartment in Harold Park

This spacious, 'Vance' apartment features:

- Three well-appointed bedrooms with floor-to-ceiling built-in wardrobes
- Separate study room, perfect for a home office or nursery
- Open-plan living and dining area, flowing onto balcony
- Quality kitchen with stone benchtops and integrated Miele appliances
- Two modern bathrooms with plenty of vanity storage, bath in ensuite
- Internal laundry with washing machine and dryer included
- Secure car space and storage cage included
- Ducted A/C, video intercom and NBN connectivity
- 200m to the Heritage-listed retail precinct Tramsheds, walking distance public transport

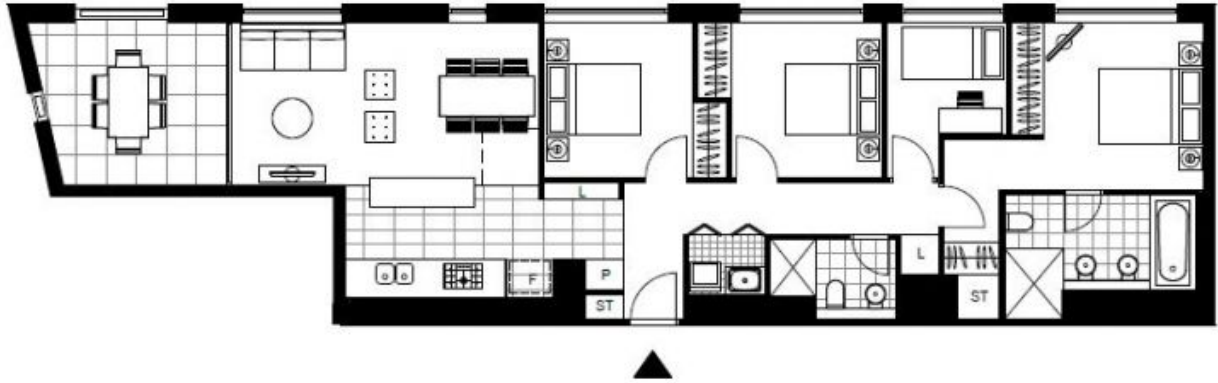
**\$1250 per week**

**Contact:** Naz Sabzpouri  
02 8588 8888  
0401 545 440

**Type:** Apartment

**Date Available:** 21/12/2021

**<https://www.resbymirvac.com>**



Plans shown are only indicative of layout. Dimensions are approximate.

**Glebe, NSW**  
805/1 Cullen Close