



Zetland, NSW
207/6 Ebsworth Street

1 BED **1** BATH

RES real estate services by mirvac

Light-Filled, 1 Bedroom Apartment in Green Square, Zetland

This conveniently located apartment features;

- Large bedroom with floor to ceiling built-in wardrobes
- Open plan living and dining area flowing onto balcony
- Modern kitchen with stone benchtop and built-in appliances
- North-West facing balcony with access from living area
- Sleek bathroom with plenty of storage
- Internal laundry with dryer included
- Secure storage cage included
- Ducted A/C, video intercom and NBN connectivity
- 300m to Woolworths, Green Square Train Station (10mins to the City) + Library and 650m to Gunyama Park Aquatic and Recreation Centre

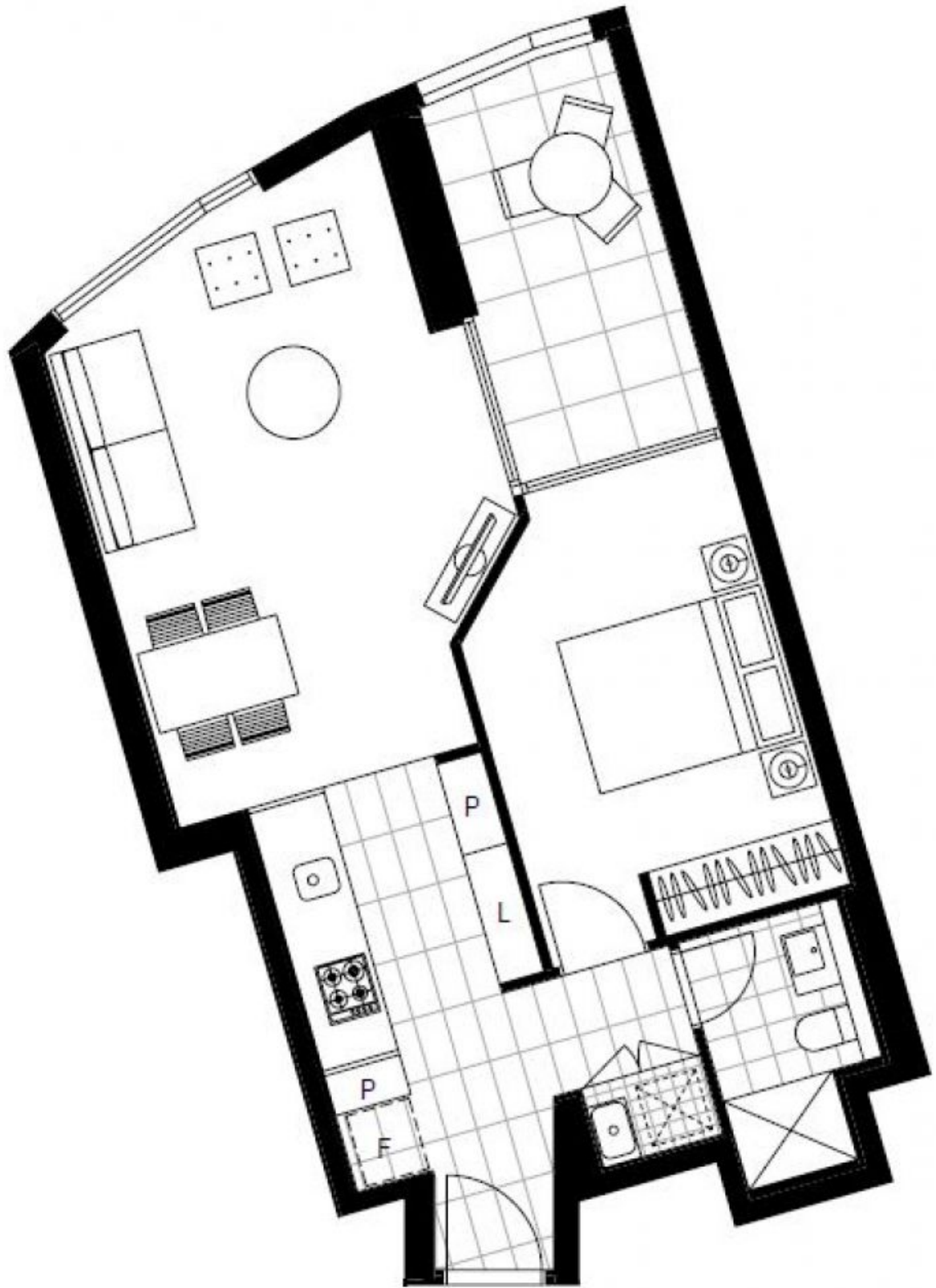
DEPOSIT TAKEN

Contact: Carmen Whiteley
02 8588 8888
0497 555 519

Type: Apartment

Date Available: 04/01/2022

<https://www.resbymirvac.com>



Plans shown are only indicative of layout. Dimensions are approximate.

Zetland, NSW
207/6 Ebsworth Street