



## Sydney Olympic Park, NSW

21608/2 Figtree Drive

**1**  
BED

**1**  
BATH



### Ultramodern 1 Bedroom Apartment within 'Scarlet', Sydney Olympic Park

This 16th floor apartment features:

- Well-appointed bedroom with floor-to-ceiling built-in wardrobes
- Spacious living and dining area, with access to balcony
- Modern kitchen with stone benchtops and built-in Miele appliances
- Sleek bathroom with plenty of vanity storage
- North Facing balcony, perfect for entertaining
- Internal laundry with dryer included
- Secure storage cage included
- Ducted A/C, video intercom and NBN connectivity
- Resident access to gym, BBQ, community room and garden
- 550m to the Olympic Park Train Station, 650m to the Bicentennial Park, 700m to ANZ Stadium

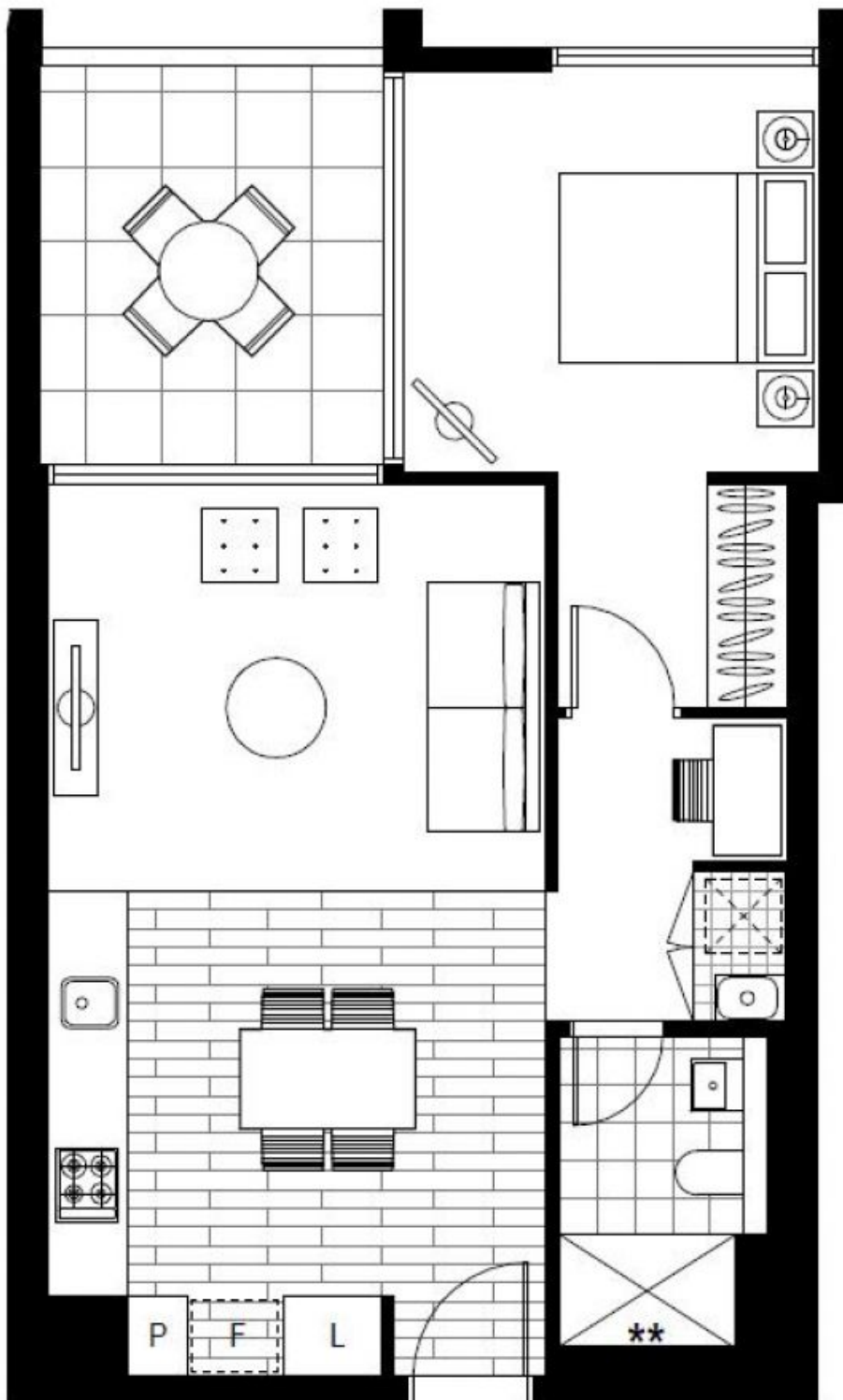
### More available

**Contact:** Christine Howison  
02 8588 8888  
0459 222 085  
Georgia Glynn  
02 8588 8888  
0481 388 777

**Type:** Apartment

**Date Available:** 31/12/2021

<https://www.resbymirvac.com>



Plans shown are only indicative of layout. Dimensions are approximate.

**Sydney Olympic Park, NSW**  
21608/2 Figtree Drive