



## DOCKLANDS, VIC

508/103 South Wharf Drive

**2** **2** **1** **RES**  
BED BATH CAR

### Brand new Voyager apartment with oversized balcony

\*Inspection Code: 9645

This property is open for inspection. In accordance with Victorian Government requirements, only fully vaccinated people will be able to attend the open for inspection and will be required to sign in via the Service VIC QR code.

We advise our team are fully vaccinated in accordance with Victorian Government requirements

Should you be unvaccinated, please contact us to organise your private inspection.

We appreciate your co-operation and thank you for your assistance.

**\$630pw - Leased**

**Contact:** Baden Lucas  
03 9645 1199  
0418 888 751

**Type:** Apartment

**Date Available:** 07/12/2021

**Leased Date:** 10/01/2021

**Bond:** \$2737

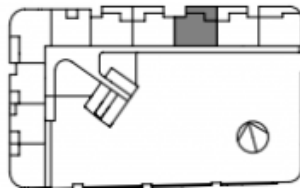
<https://www.resbymirvac.com>



LEVEL 5

APT 506

LOCATION PLAN



PODIUM  
2 BEDROOM + MEDIA  
APARTMENT

Internal Area 91 m<sup>2</sup>  
Balcony Area 18 m<sup>2</sup>  
Total Area 109 m<sup>2</sup>

Area subject to final survey, area includes balcony and/or terrace where applicable. It excludes parking and external storage area.

IMPORTANT NOTICE

Please note that this floor plan was produced prior to completion of Construction. The information contained herein is believed to be correct but is not guaranteed. Dimensions and areas are approximate and areas are calculated in accordance with the Property Council of Australia Method of Measurement. Floor plans do not show additional features within each lot such as hot water systems, service yards, interlocks and side and rear retaining walls. Purchaser option noted on floor plans is located on some lots only and is available at purchaser cost only at time of sale. Changes will undoubtedly be made during development and subject to change without notice in accordance with the provisions of the contract for sale. Special condition 10 of the contract for sale includes further information in relation to the sale of the lot to be transferred. The furniture and furnishings depicted are not included with any sale and furnishings should not be taken to indicate the final position of power points, TV connection points and the like. Prospective purchasers must refer to the contract for sale for the list of inclusions. All graphics, including the layout, landscaping, planting, louvers and sun shading devices, are intended as a guide only and are not to be relied on as representative of the final product. Built-in furniture necessary for services are not depicted.

06/11/2015 (A)

### Pergola Below

Plans shown are only indicative of layout. Dimensions are approximate.

**DOCKLANDS, VIC**  
508/103 South Wharf Drive