



## DOCKLANDS, VIC

1002/80 Lorimer Street

**2** BED **2** BATH **2** CAR 

### Impressive Yarra's Edge apartment with marina views

This property is open for inspection. In accordance with Victorian Government requirements, only fully vaccinated people will be able to attend the open for inspection and will be required to sign in via the Service VIC QR code.

We advise our team are fully vaccinated in accordance with Victorian Government requirements

Should you be unvaccinated, please contact us to organise your private inspection.

We appreciate your co-operation and thank you for your assistance.

**\$750 per week**

**Contact:** Aleiasha Clark  
03 9645 1199  
0491 174 507

**Type:** Apartment

**Date Available:** 07/01/2022

**Leased Date:** 02/02/2022

**Bond:** \$3258

<https://www.resbymirvac.com>

Located on the 10th floor of Yarra's Edge's Tower 4, this brilliant 2 Bedroom apartment boasts a northern aspect with spectacular marina views.

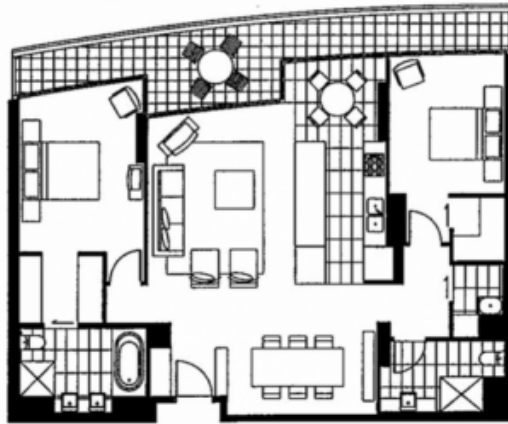


**real estate  
services**  
by mirvac

03 9645 1199  
enquiriesvic@resbymirvac.com  
Resbymirvac.com

Living	3.8 x 4.6	Bedroom 1	3.2 x 4.2	Plus Robe
Dining	2.3 x 3.9	Bedroom 2	3.5 x 3.6	Plus Robe
Kitchen	2.1 x 2.1			

Please note that this floor plan is a guide only.  
The information contained herein is not guaranteed.  
Dimensions are approximate. Prospect purchasers  
must rely on their own enquiries.



Plans shown are only indicative of layout. Dimensions are approximate.

**DOCKLANDS, VIC**  
1002/80 Lorimer Street