



EAST MELBOURNE, VIC
715/280 Albert Street

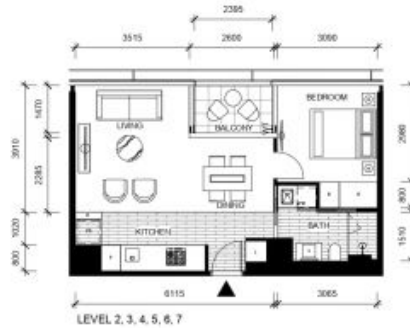
1 BED **1** BATH



The Eastbourne ? 1Bedroom High end living
Imagine living opposite Fitzroy Gardens in ?The Eastbourne? apartment complex. Where elegance is timeless in this stunning one bedroom apartment, defined by bespoke luxury and style plus an amazing array of communal amenities.

- Bespoke design, quality construction and finishes
- Superb timber & prestige Miele equipped kitchen
- Generous cupboard space
- Floor to ceiling windows
- Sleek bathroom plus European laundry
- Ducted heating and cooling
- Video intercom entry

\$450 per week
Contact: Baden Lucas
03 9645 1199
0418 888 751
Aleisha Clark
03 9645 1199
0491 174 507
Type: Apartment
Date Available: 23/12/2021
Leased Date: 15/01/2022
Bond: \$1955
<https://www.resbymirvac.com>



THE EASTBOURNE

SCALE 1:100 @ A3

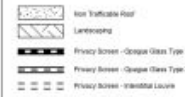
Please note that all the dimensions on plan are indicative only and provided for information only.

- APT 2-15
- APT 3-15
- APT 4-15
- APT 5-15
- APT 6-15
- APT 7-15

LOCATION PLAN



FOR CONSTRUCTION DIMENSIONED PLAN
APARTMENT
1 BED 1 BATH



APPROXIMATE NOTICE

While every effort has been taken in preparing this interim dimensioned floorplan, the measurements and areas shown are approximate and are provided as a guide only and may change during construction completion. Please note any changes will be notified. Items are also indicative and intended as a guide only. The plan does not show additional features within each room such as hot water systems, fibre optic and wireless broadband, connections for services are not shown. The fixtures and fittings depicted are not included with any sale and should not be taken to indicate the final position of these items. In construction contracts and the law, construction documents made with the intent to take the final construction. The graphics, including layout, materials, finishes and colours are intended as a guide only and do not to be relied on as a representation of the final product. This interim floorplan has been provided for the specific purpose of enabling the purchaser to commence consideration of their interior design process and for no other reason. In considering their interior design process purchasers must take into account the nature of the floor plan and the fact that changes may be made to the dimensions and measurements prior to settlement. Mirvac and its related body corporate and their employees and agents are not responsible for the accuracy of the interim dimensioned floorplan as against the final floorplan or any action taken in reliance on the interim floorplan by the purchaser.

15/01/15

For Further enquiries
call 03 9645 9400 or visit
theeastbourne.mirvac.com



Plans shown are only indicative of layout. Dimensions are approximate.

EAST MELBOURNE, VIC
715/280 Albert Street