



**EAST MELBOURNE, VIC**  
715/280 Albert Street

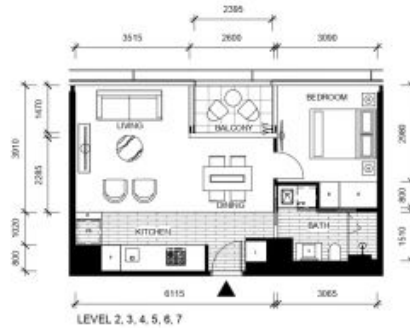
**1** BED **1** BATH



**The Eastbourne ? 1Bedroom High end living**  
Imagine living opposite Fitzroy Gardens in ?The Eastbourne? apartment complex. Where elegance is timeless in this stunning one bedroom apartment, defined by bespoke luxury and style plus an amazing array of communal amenities.

- Bespoke design, quality construction and finishes
- Superb timber & prestige Miele equipped kitchen
- Generous cupboard space
- Floor to ceiling windows
- Sleek bathroom plus European laundry
- Ducted heating and cooling
- Video intercom entry

**\$450 per week**  
**Contact:** Baden Lucas  
 03 9645 1199  
 0418 888 751  
 Aleiasha Clark  
 03 9645 1199  
 0491 174 507  
**Type:** Apartment  
**Date Available:** 23/12/2021  
**Leased Date:** 15/01/2022  
**Bond:** \$1955  
<https://www.resbymirvac.com>



LEVEL 2, 3, 4, 5, 6, 7

THE EASTBOURNE

SCALE 1:100 @ A3

Please note that all the dimensions on plan are indicative only and provided for information only.

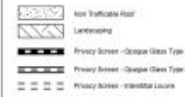
- APT 2-15
- APT 3-15
- APT 4-15
- APT 5-15
- APT 6-15
- APT 7-15

LOCATION PLAN



CITY

FOR CONSTRUCTION DIMENSIONED PLAN  
APARTMENT  
1 BED 1 BATH



APPROXIMATE NOTICE

While every effort has been taken in preparing this interim dimensioned floorplan, the measurements and areas shown are approximate and are provided as a guide only and may change during construction completion. Please note any changes will be notified. Areas are also indicative and intended as a guide only. The plan does not show additional features within each room such as hot water systems, fibre-optical and wireless broadband, connections for services are not shown. The fixtures and fittings depicted are not included with any sale and should not be taken to indicate the final position of these items. In construction contracts and the law, construction particulars prevail in the contract for sale over the floor plan. The graphics, including layout, materials, finishes and colours are intended as a guide only and do not to be relied on as a representation of the final product. This interim floorplan has been provided for the specific purpose of enabling the purchaser to commence consideration of their interior design process and for no other reason. In considering their interior design process purchasers must take into account the relative nature of the floor plan and the fact that changes may be made to the dimensions and measurements prior to settlement. Mirvac and its related body corporate and their employees and agents are not responsible for the accuracy of the interim dimensioned floorplan as against the final floorplan or for any action taken in reliance on the interim floorplan by the purchaser.

15/01/15

For Further enquiries  
call 03 9645 9400 or visit  
[theeastbourne.mirvac.com](http://theeastbourne.mirvac.com)



Plans shown are only indicative of layout. Dimensions are approximate.

**EAST MELBOURNE, VIC**  
715/280 Albert Street