



DOCKLANDS, VIC

2608/50 Lorimer Street

2
BED

2
BATH

2
CAR



Unmatched space, city views, and splashes of superb luxury.

With a refined and sophisticated edge that raises this apartment to a truly elite level, this pristine and ultra-spacious two bedroom, two bathroom residence has a wonderful position in the exclusive Yarra's Edge precinct which is highly sought-after by owner-occupiers and investors.

From the unforgettable city views to interiors that dazzle with style, contemporary class, and superb space, this 26th floor apartment is irresistible. The incredible central living zone has a fantastic amount of room for you to move around in, with generous lounge and dining areas giving you amazing living options. In this main hub you can also find the state of the art kitchen which oozes elegance and boasts stunning bench and storage space along with stainless steel appliances. There is also a small meals area just off the kitchen.

Contact Agent

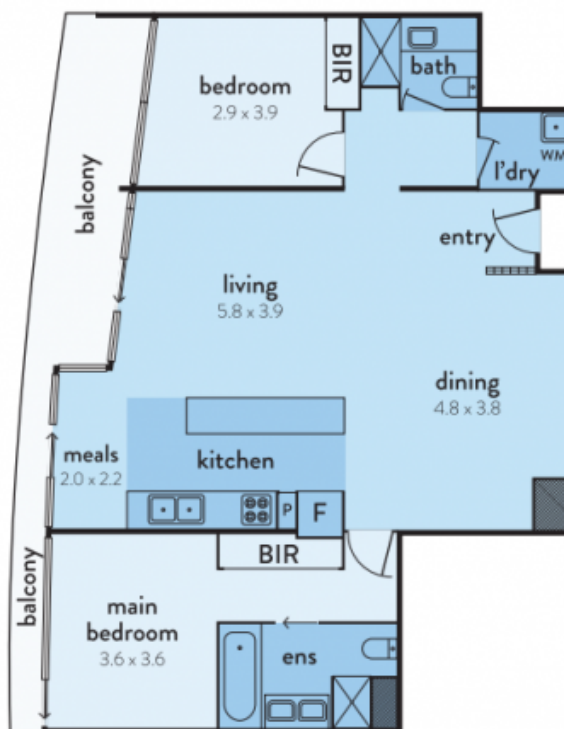
Contact: Baden Lucas
03 9645 1199
0418 888 751

Type: Apartment

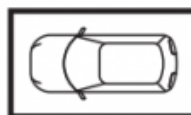
Sold Date: 21/01/2022

<https://www.resbymirvac.com>

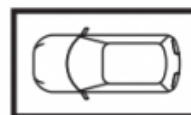
2608/50 LORIMER STREET, DOCKLANDS



This floorplan is an artist's impression only, it contains information that we believe to be reliable however we cannot guarantee and accept no responsibility for the accuracy of information supplied. All dimensions are indicative and listed in metres. Interested parties should take their own measurements or engage the services of a licensed surveyor.



carspace
(not in position)



carspace
(not in position)

Plans shown are only indicative of layout. Dimensions are approximate.

DOCKLANDS, VIC
2608/50 Lorimer Street