



## DOCKLANDS, VIC

501/103 South Wharf Drive

**3** BED **2** BATH **1** CAR 

### Experience next-level living in premier Mirvac 'Voyager' building

\*Inspection code 9645

This property is open for inspection. In accordance with Victorian Government requirements, only fully vaccinated people will be able to attend the open for inspection and will be required to sign in via the Service VIC QR code.

We advise our team are fully vaccinated in accordance with Victorian Government requirements

Should you be unvaccinated, please contact us to organise your private inspection.

We appreciate your co-operation and thank you for your assistance.

**\$650pw - Leased**

**Contact:** Baden Lucas  
03 9645 1199  
0418 888 751  
Aleisha Clark  
03 9645 1199  
0491 174 507

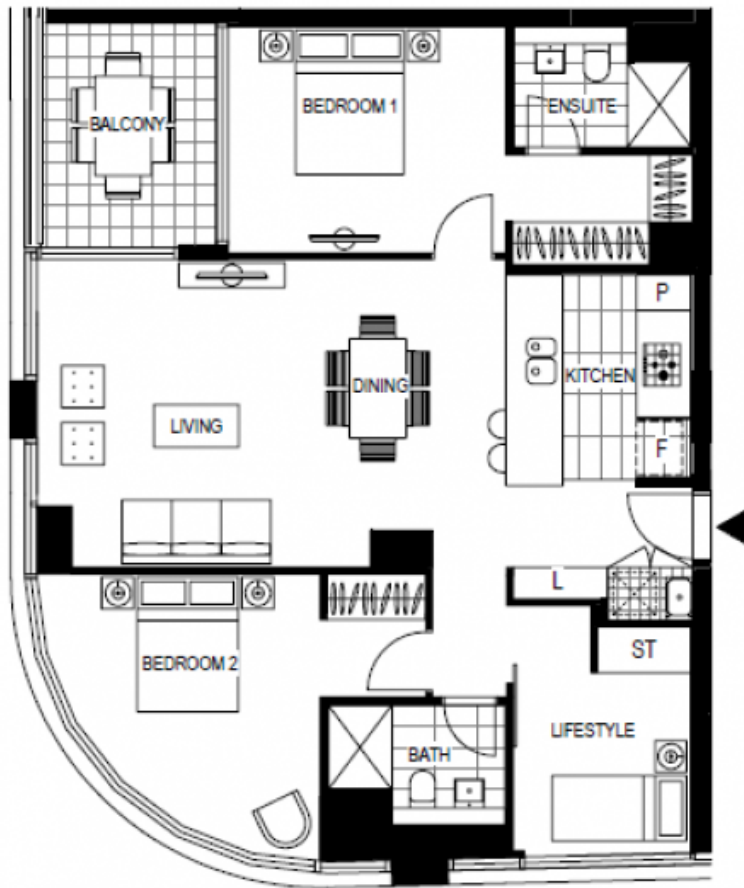
**Type:** Apartment

**Date Available:** 22/11/2021

**Leased Date:** 07/12/2021

**Bond:** \$2824

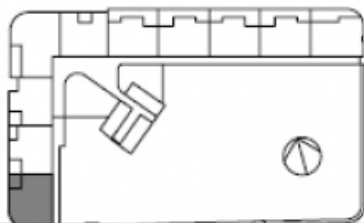
<https://www.resbymirvac.com>



LEVEL 4, 5, 6

APT 4.01  
APT 5.01  
APT 6.01

LOCATION PLAN



PODIUM  
2 BEDROOM + LIFESTYLE  
APARTMENT

Internal Area	104 m <sup>2</sup>
Balcony Area	8 m <sup>2</sup>
<b>Total Area</b>	<b>112 m<sup>2</sup></b>

Area subject to final survey, area includes balcony and/or terrace where applicable. It excludes parking and external storage areas.

IMPORTANT NOTICE

Please note that this floor plan was produced prior to completion of Construction. The information contained herein is believed to be correct but is not guaranteed. Dimensions and areas are approximate and areas are calculated in accordance with the Property Council of Australia Method of Measurement. Floor plans do not show additional features within each lot such as hot water systems, service yards, interlocks and side and rear retaining walls. Purchase option noted on floor plans is located on some lots only and is available at purchaser cost only at time of sale. Changes will undoubtedly be made during development and subject to change without notice in accordance with the provisions of the contract for sale. Special condition 10 of the contract for sale includes further information in relation to the size of the lot to be transferred. The furniture and furnishings depicted are not included with any sale and furnishings should not be taken to indicate the final position of power points, TV connection points and the like. Prospective purchasers must refer to the contract for sale for the list of inclusions. All graphics, including site layout, balconies, stairs, lounge and sun shading devices, are intended as a guide only and are not to be relied on as representative of the final product. Bulkheads necessary for services are not depicted.

06/11/2015 (A)

For further enquiries

Plans shown are only indicative of layout. Dimensions are approximate.

**DOCKLANDS, VIC**  
501/103 South Wharf Drive