



**DOCKLANDS, VIC**  
1407/50 Lorimer Street

**1** BED   **1** BATH   **1** CAR



**Massive 1Bedroom apartment**

This property is open for inspection. In accordance with Victorian Government requirements, only fully vaccinated people will be able to attend the open for inspection and will be required to sign in via the Service VIC QR code.

We advise our team are fully vaccinated in accordance with Victorian Government requirements

Should you be unvaccinated, please contact us to organise your private inspection.

We appreciate your co-operation and thank you for your assistance.

Experience a lifestyle like no other with this stunning light filled apartment at the head of the Yarra's Edge precinct.

**MASSIVE 1Bedroom for \$450pw**

**Contact:** Baden Lucas  
03 9645 1199  
0418 888 751  
Aleisha Clark  
03 9645 1199  
0491 174 507

**Type:** Apartment

**Date Available:** 06/12/2021

**Leased Date:** 24/12/2021

**Bond:** \$1955

<https://www.resbymirvac.com>



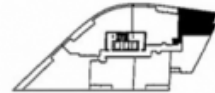
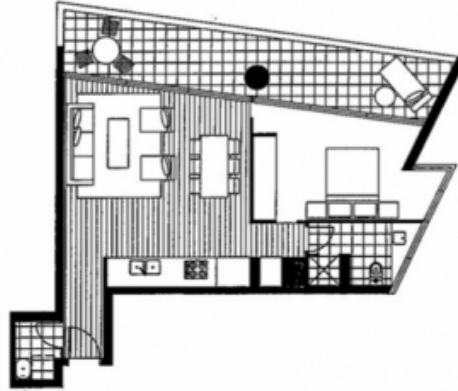
real estate  
services  
by mirvac

03 9645 1199  
enquiriesvic@resbymirvac.com  
Resbymirvac.com

Living Dining 4.1 x 3.4  
3.6 x 2.0

Bedroom 1 3.1 x 3.7 Plus Robe

Please note that this floor plan is a guide only.  
The information contained herein is not guaranteed.  
Dimensions are approximate. Prospective purchasers  
must rely on their own enquiries.



Plans shown are only indicative of layout. Dimensions are approximate.

**DOCKLANDS, VIC**  
1407/50 Lorimer Street