



Glebe, NSW

1212/1 Scotsman Street

1
BED

1
BATH



Spacious 1-Bedroom Apartment in Parkside Location

This 56sqm, Mirvac apartment features:

- Well appointed bedroom with built-in wardrobes
- Flowing living and dining area, with access to balcony
- Sleek kitchen with stone benchtop and built-in Miele appliances
- Modern bathroom with plenty of vanity storage
- Internal laundry with washing machine and dryer included
- Secure storage cage included
- Ducted A/C, video intercom and NBN connectivity
- 450m to the Heritage-listed Tramsheds, light rail and public transport

More apartments available!

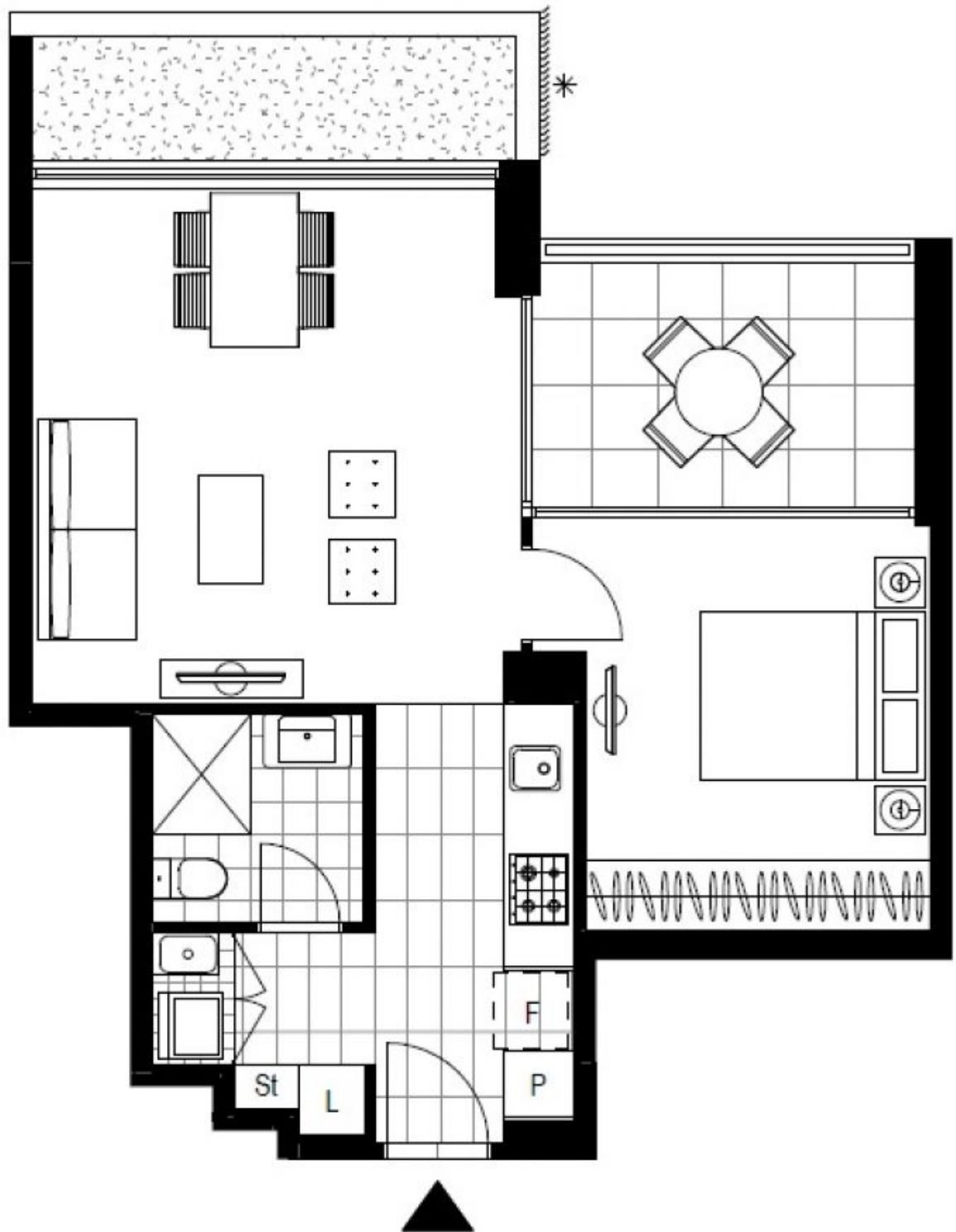
Contact: Carmen Whiteley
02 8588 8888
0497 555 519

Type: Apartment

Date Available: 15/11/2021

<https://www.resbymirvac.com>

For more information please contact Real Estate Services by Mirvac on 02 8588 8888 or email enquiries@resbymirvac.com - Your Onsite Agent!



LEVEL 2

Plans shown are only indicative of layout. Dimensions are approximate.

Glebe, NSW
1212/1 Scotsman Street