



EAST MELBOURNE, VIC
1201/296 Victoria Parade

2 BED **2** BATH **2** CAR 

The Eastbourne - 2Bedroom apartment with study desk and bathtub

Imagine living opposite Fitzroy Gardens in The Eastbourne apartment complex. Where elegance is timeless in this stunning two bedroom apartment, defined by bespoke luxury and style plus an amazing array of communal amenities.

- Apartment features:
- Bespoke design, quality construction and finishes
 - Internal space of 115m²
 - Large Balcony ? 17m²
 - X2 Car spaces
 - Storage cage near car space
 - Luxurious ensuite with feature bathtub

\$1000 pw. Call the inspection HOTLINE TODAY!

Contact: Aleiasha Clark
03 9645 1199
0491 174 507

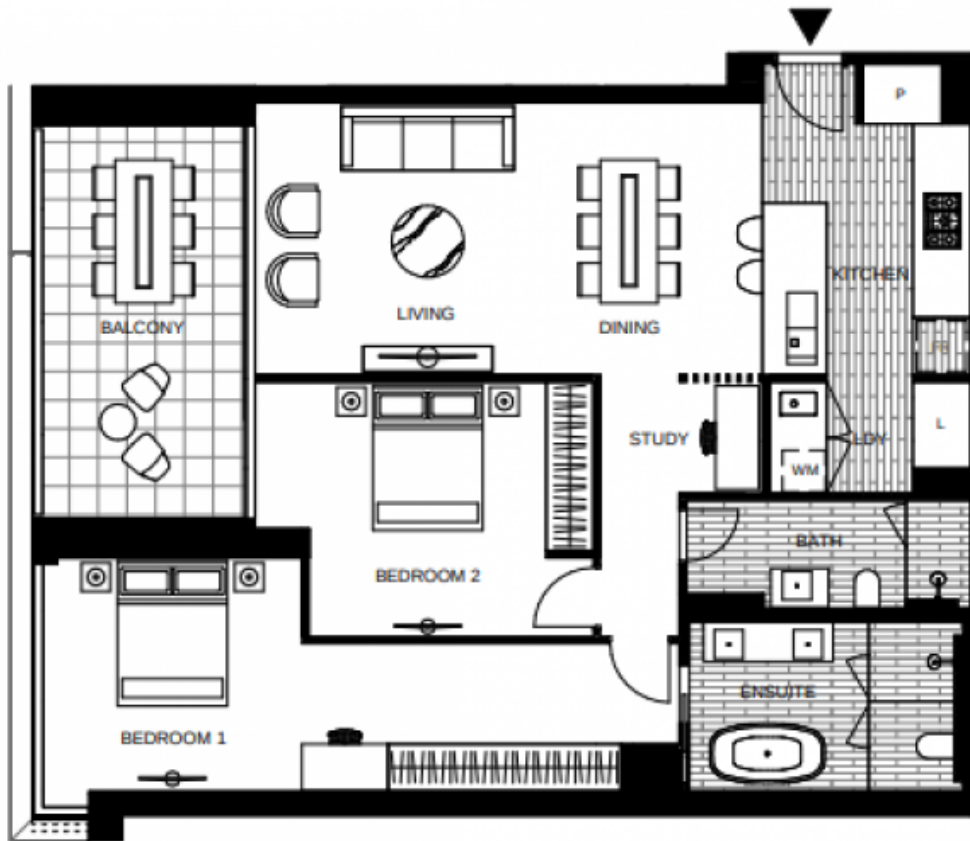
Type: Apartment

Date Available: 05/11/2021

Leased Date: 22/11/2021

Bond: \$4345

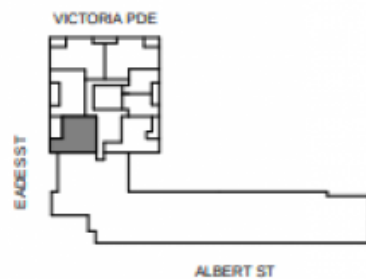
<https://www.resbymirvac.com>



LEVEL 12V, 13V, 14V

APT 12-01V
 APT 13-01V
 APT 14-01V

LOCATION PLAN



**APARTMENT
 2 BED 2 BATH + STUDY**

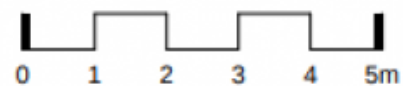


Internal Area 115m²

Balcony Area 17m²

Total Area 132m²

Areas subject to final survey, area includes balcony and/or terrace where applicable. It excludes parking and external storage areas.



Plans shown are only indicative of layout. Dimensions are approximate.

EAST MELBOURNE, VIC
 1201/296 Victoria Parade