



**DOCKLANDS, VIC**  
1208/50 Lorimer Street

**2** BED **2** BATH **2** CAR



**Impressive 2Bedroom abode in ‘Tower 1’**  
Apply today via 2Apply

Situated within Mirvac’s prestigious Yarra’s Edge district this luxurious apartment located on the 12th floor of Tower 1 has it all!

- Two generous bedrooms either side of the bright spacious open plan living and dining areas
- Double roller blinds throughout
- Gourmet kitchen with European appliances
- Large island bench with ample cupboards and drawers
- Pull Out Pantry
- Separate Laundry

**MASSIVE 2Bedroom for JUST \$700 per week**

**Contact:** Baden Lucas  
03 9645 1199  
0418 888 751  
Aleisha Clark  
03 9645 1199  
0491 174 507

**Type:** Apartment  
**Date Available:** 22/10/2021  
**Leased Date:** 03/12/2021  
**Bond:** \$3041  
<https://www.resbymirvac.com>

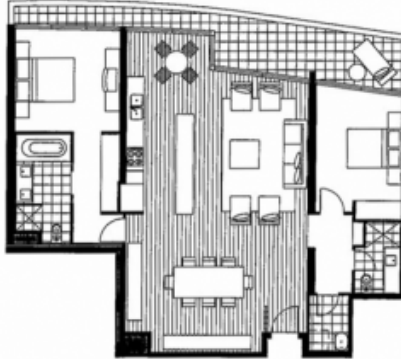


real estate  
services  
by mirvac

03 9645 1199  
[enquiriesvic@resbymirvac.com](mailto:enquiriesvic@resbymirvac.com)  
[Resbymirvac.com](http://Resbymirvac.com)

Living	5.8 x 3.9	Bedroom 1	3.6 x 3.6	Plus Robe
Breakfast	2.0 x 3.2	Bedroom 2	3.9 x 2.9	Plus Robe
Dining	3.0 x 4.8			

Please note that this floor plan is a guide only.  
The information contained herein is not guaranteed.  
Dimensions are approximate. Prospective purchasers  
must rely on their own enquiries.



Plans shown are only indicative of layout. Dimensions are approximate.

**DOCKLANDS, VIC**  
1208/50 Lorimer Street