



DOCKLANDS, VIC
1208/50 Lorimer Street

2 BED **2** BATH **2** CAR



Impressive 2Bedroom abode in ‘Tower 1’
Apply today via 2Apply

Situated within Mirvac’s prestigious Yarra’s Edge district this luxurious apartment located on the 12th floor of Tower 1 has it all!

- Two generous bedrooms either side of the bright spacious open plan living and dining areas
- Double roller blinds throughout
- Gourmet kitchen with European appliances
- Large island bench with ample cupboards and drawers
- Pull Out Pantry
- Separate Laundry

MASSIVE 2Bedroom for JUST \$700 per week

Contact: Baden Lucas
03 9645 1199
0418 888 751
Aleisha Clark
03 9645 1199
0491 174 507

Type: Apartment
Date Available: 22/10/2021
Leased Date: 03/12/2021
Bond: \$3041
<https://www.resbymirvac.com>

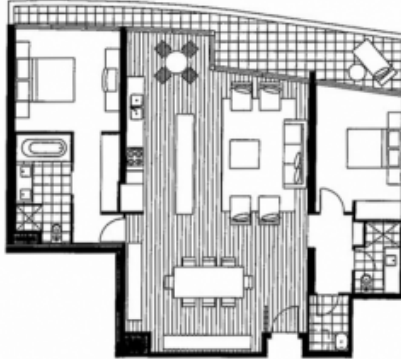


real estate
services
by mirvac

03 9645 1199
enquiriesvic@resbymirvac.com
Resbymirvac.com

Living	5.8 x 3.9	Bedroom 1	3.6 x 3.6	Plus Robe
Breakfast	2.0 x 3.2	Bedroom 2	3.9 x 2.9	Plus Robe
Dining	3.0 x 4.8			

Please note that this floor plan is a guide only.
The information contained herein is not guaranteed.
Dimensions are approximate. Prospective purchasers
must rely on their own enquiries.



Plans shown are only indicative of layout. Dimensions are approximate.

DOCKLANDS, VIC
1208/50 Lorimer Street