



**DOCKLANDS, VIC**  
1708/50 Lorimer Street

**2** BED **2** BATH **2** CAR 

**Magnificent 2Bedroom apartment in Yarra&apos;s Edge**  
Apply today via 2Apply

Situated within Mirvac&apos;s prestigious Yarra&apos;s Edge district this luxurious apartment located on the 17th floor of Tower 1 has it all!

Experience breath-taking views of Port Phillip Bay from the comforts of a smart and central open plan living area harbouring an abundance of light and space.

Spacious living and dining area

**\$625 per week**

**Contact:** Baden Lucas  
03 9645 1199  
0418 888 751  
Aleisha Clark  
03 9645 1199  
0491 174 507

**Type:** Apartment  
**Date Available:** 28/10/2021  
**Leased Date:** 08/11/2021  
**Bond:** \$2715  
<https://www.resbymirvac.com>

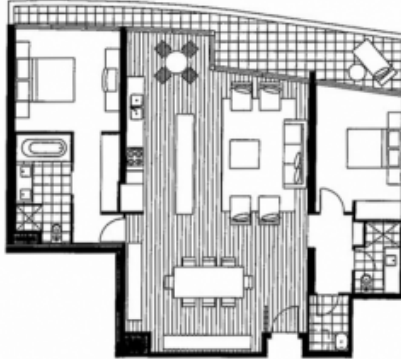


real estate  
services  
by mirvac

03 9645 1199  
[enquiriesvic@resbymirvac.com](mailto:enquiriesvic@resbymirvac.com)  
[Resbymirvac.com](http://Resbymirvac.com)

Living	5.8 x 3.9	Bedroom 1	3.6 x 3.6	Plus Robe
Breakfast	2.0 x 3.2	Bedroom 2	3.9 x 2.9	Plus Robe
Dining	3.0 x 4.8			

Please note that this floor plan is a guide only.  
The information contained herein is not guaranteed.  
Dimensions are approximate. Prospective purchasers  
must rely on their own enquiries.



Plans shown are only indicative of layout. Dimensions are approximate.

**DOCKLANDS, VIC**  
1708/50 Lorimer Street