



Glebe, NSW
23 Minogue Crescent

1
BED

1
BATH



Furnished 1 Bedroom Apartment in Harold Park by Mirvac

This premium Mirvac apartment features

- Open-plan living area, with private street access and courtyard
- Large bedroom with floor-to-ceiling built-in wardrobes
- Modern kitchen with stone benchtops and built-in Miele appliances
- Sleek bathroom with plenty of vanity storage
- Internal laundry with washing machine and dryer included
- Furnished with all the essentials included
- Secure storage cage included
- Ducted A/C, video intercom and NBN connectivity
- 450m to the Heritage-listed Tramsheds, light rail and public transport

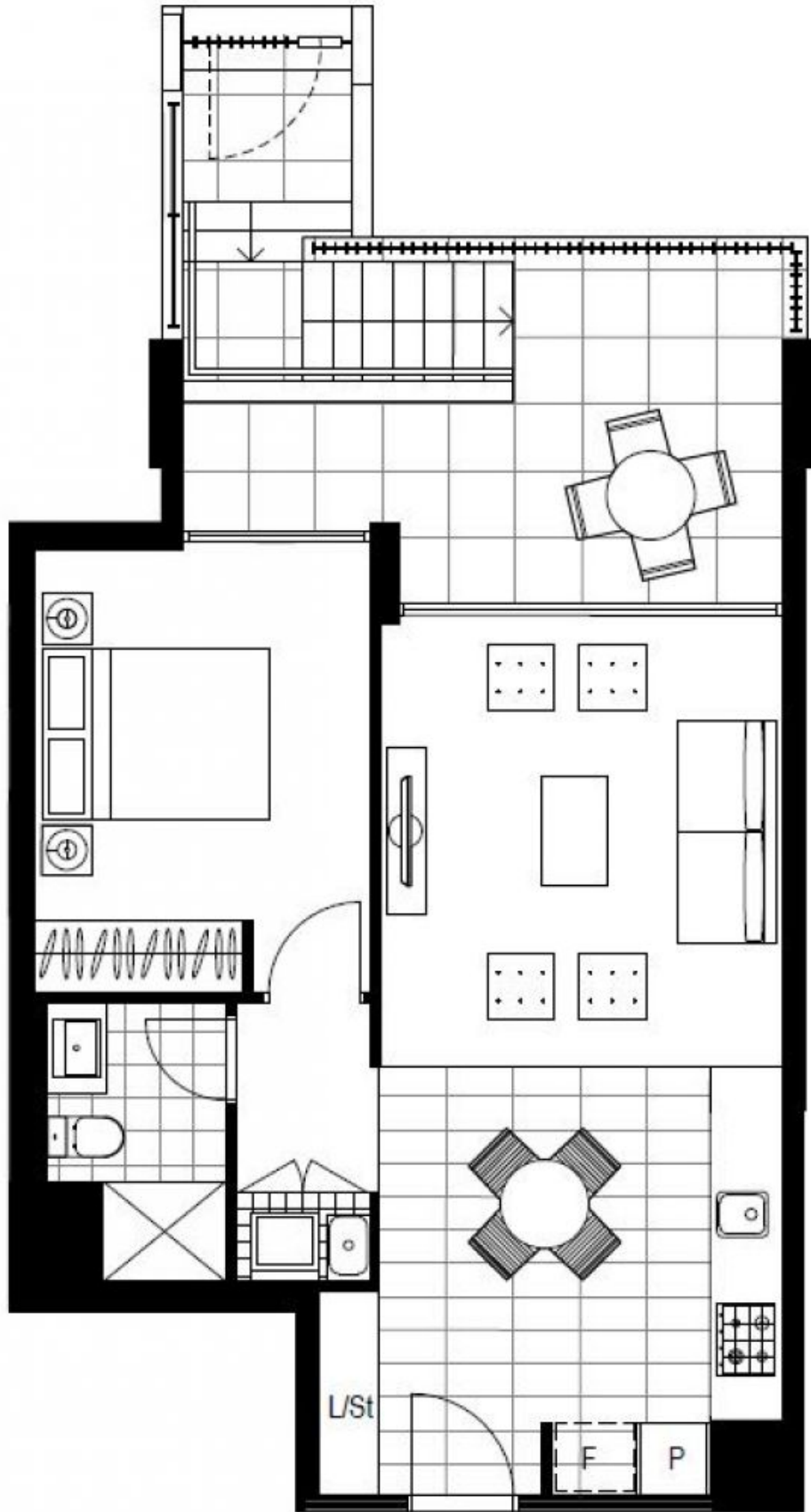
DEPOSIT TAKEN - FIRST INSPECTION

Contact: Carmen Whiteley
02 8588 8888
0497 555 519

Type: Apartment

Date Available: 30/10/2021

<https://www.resbymirvac.com>



Plans shown are only indicative of layout. Dimensions are approximate.

Glebe, NSW
23 Minogue Crescent