



DOCKLANDS, VIC

1301/50 Lorimer Street



Spectacular marina sunset views from 3Bedroom apartment

This is the one!! You will be mesmerized by the most incredible vistas Docklands has to offer. Encompassing over 300 degree views from Port Phillip Bay, Bolte Bridge, Victoria Harbour, Yarra River to the stunning backdrop of Melbourne's CBD.

Total area of approximately 218sqm
3 spacious bedrooms with BIR's
Master suite with bathtub, seperate shower and double vanity
Open plan living/ dining
Intercom entry
Separate laundry

LEASED- More available

Contact: Aleiasha Clark
03 9645 1199
0491 174 507

Type: Apartment

Date Available: 13/10/2021

Leased Date: 01/11/2021

Bond: \$5700

<https://www.resbymirvac.com>

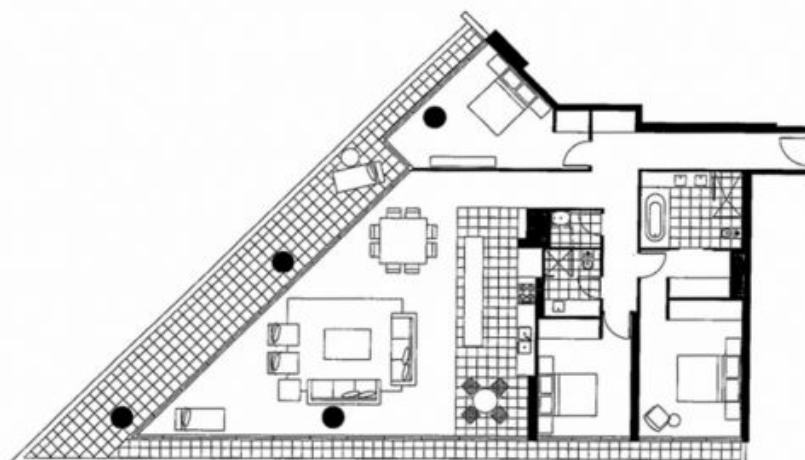


Tower 1
Apartment 01
Level 8 - 29

Living 3.8 x 8.3
Breakfast 2.9 x 2.3
Dining 4.9 x 4.2

Bedroom 1 3.8 x 3.3 Plus Robe
Bedroom 2 3.2 x 3.0 Plus Robe
Bedroom 3 3.9 x 3.0 Plus Robe

Please note that this floor plan is a guide only.
The information contained herein is not guaranteed.
Dimensions are approximate. Prospect purchasers
must rely on their own enquiries.



real estate
services
by mirvac

03 9645 1199
62 River Esplanade, Docklands VIC 3008
Resbymirvac.com



Plans shown are only indicative of layout. Dimensions are approximate.

DOCKLANDS, VIC
1301/50 Lorimer Street