



Sydney Olympic Park, NSW

10903/2 Figtree Drive

1

BED

1

BATH

RES

Stylish North Facing 1 Bedroom Apartment in 'Pavilions' by Mirvac

This 59sqm, 1-Bedroom Apartment features:

- Spacious bedroom with generous built-in wardrobes
- Open-plan living and dining area, leading to the balcony
- Contemporary kitchen with stone benchtops and Smeg appliances
- Sleek bathrooms with generous vanity storage
- North-facing Sunny balcony, perfect for entertaining
- Internal laundry with dryer included
- Study area included, perfect for a home office
- Secured storage cage included
- Ducted A/C, video intercom and NBN connectivity
- 550m to the Olympic Park Train Station, 650m to the Bicentennial Park, 700m - Resident access to gym, BBQ, community room and garden

\$420 per week

Contact:

Georgia Glynn

02 8588 8888

0481 388 777

Christine Howison

02 8588 8888

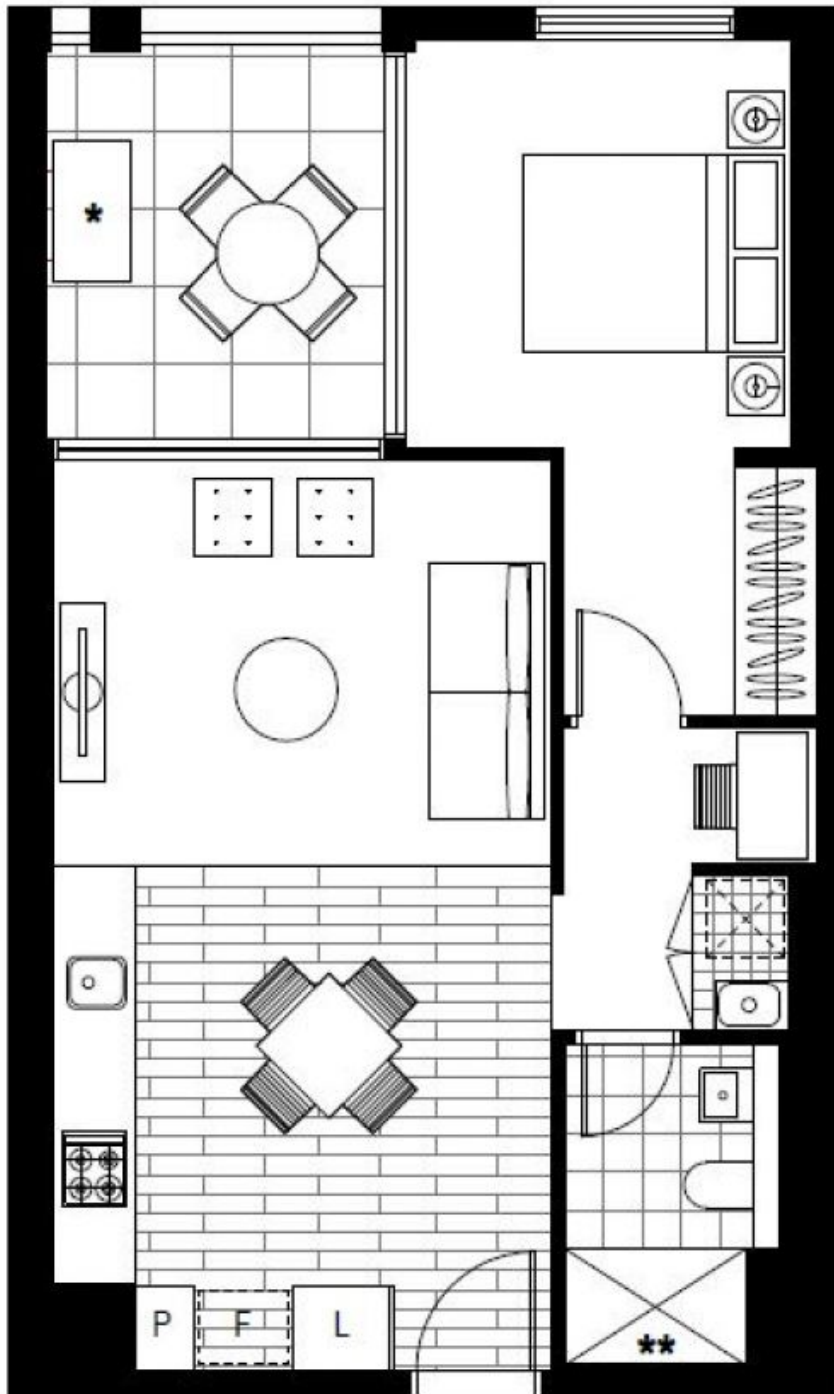
0459 222 085

Type:

Apartment

Date Available: 15/10/2021

<https://www.resbymirvac.com>



Plans shown are only indicative of layout. Dimensions are approximate.

Sydney Olympic Park, NSW
10903/2 Figtree Drive