



**St Leonards, NSW**  
910/472 Pacific Highway

**2** BED **2** BATH **1** CAR

**RES** real estate services by mirvac

**Stunning North Facing 2 Bedroom Apartment in St Leonard Square**

Due to current NSW COVID - 19 orders, inspections of our properties are available ONLY by private inspections. A limit of 1 person per inspection applies together with mandatory mask wearing. Virtual tours also available via appointment. Please contact our leasing agent on 0459 222 085 to inspect this apartment.

This 97sqm, Mirvac apartment features:

- Well-appointed bedrooms with generous floor-to-ceiling built-in wardrobes
- Spacious living and dining area, with access to balcony

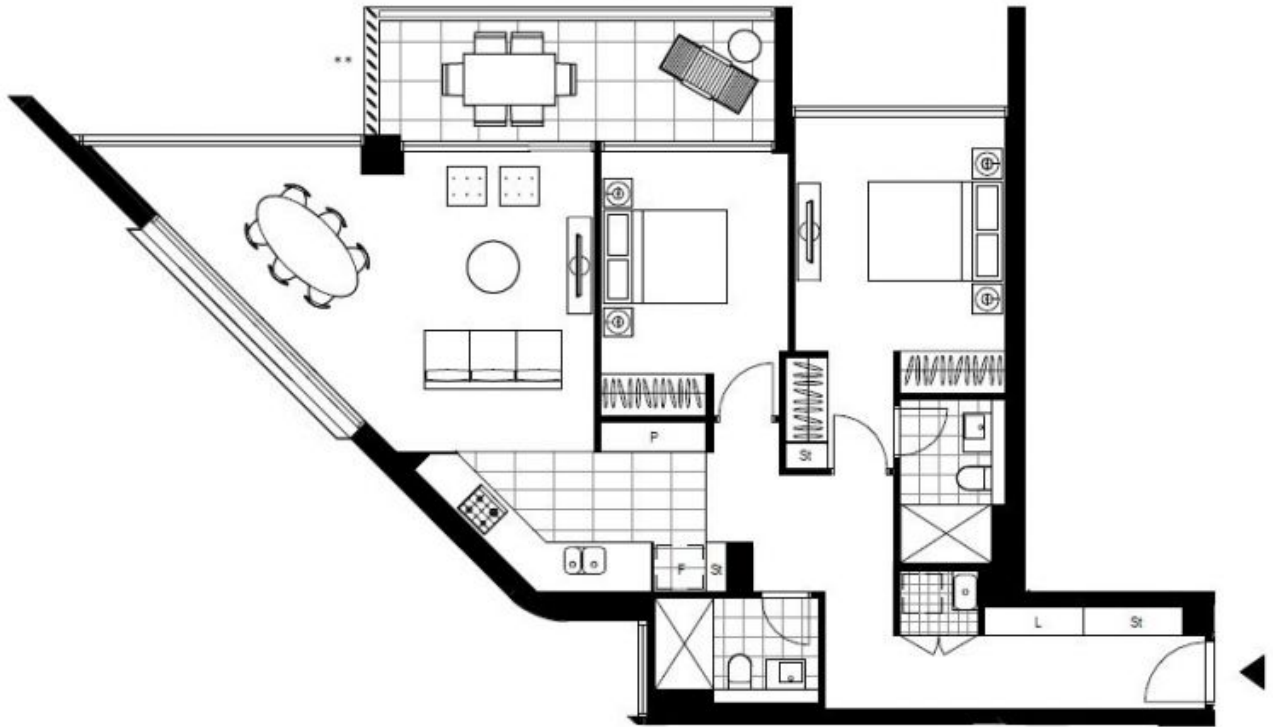
**Deposit Taken**

**Contact:** Christine Howison  
02 8588 8888  
0459 222 085  
Georgia Glynn  
02 8588 8888  
0481 388 777

**Type:** Apartment

**Date Available:** 04/11/2021

**<https://www.resbymirvac.com>**



Plans shown are only indicative of layout. Dimensions are approximate.

**St Leonards, NSW**  
910/472 Pacific Highway