



EAST MELBOURNE, VIC

1008/296 Victoria Parade

1
BED

1
BATH

1
CAR



Eastbourne excellence right next to Fitzroy Gardens

Wonderfully situated on an ultra-generous 65 sqm (approx.), breathtaking with sumptuous modern luxury, and located directly opposite the iconic Fitzroy Gardens, this 1 bedroom apartment in Mirvac's flagship The Eastbourne is truly memorable.

The Eastbourne is the pride of Mirvac's residential developments and is designed by award-winning architects Bates Smart

Luxury carpet and amazing natural light are the hallmarks of the immense lounge room

Easterly orientation gives you views out to the Dandenong Ranges, with views enjoyed from the living zone and balcony

Contact Agent

Contact: Baden Lucas
03 9645 1199
0418 888 751

Type: Apartment

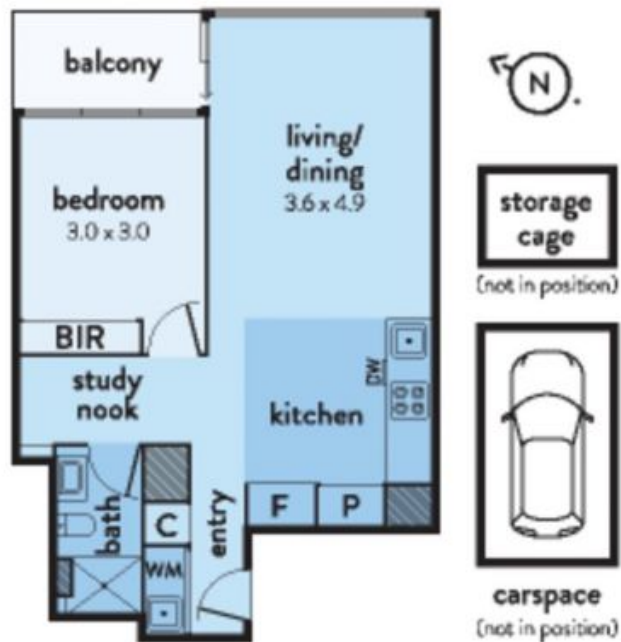
Sold Date: 01/11/2021

<https://www.resbymirvac.com>

1008/296 VICTORIA PARADE EAST MELBOURNE



This floorplan is a artist's impression only. It contains information that we believe to be reliable however we cannot guarantee and accept no responsibility for the accuracy of information supplied. All dimensions are indicative and listed in metres. Interested parties should take their own measurements or engage the services of a licensed surveyor.



Plans shown are only indicative of layout. Dimensions are approximate.

EAST MELBOURNE, VIC
1008/296 Victoria Parade