



## DOCKLANDS, VIC

2006/1 Point Park Crescent

2  
BED

1  
BATH

1  
CAR



### Affordable 2Bedroom Corner Apartment with Great Views!

\*Inspection code: 9645

This excellent 20th floor residence offers light-filled and relaxed central living and meals provides a sizeable area suited for morning breakfasts and lazing in front of the TV after a long day at work. This zone further opens out to a long balcony where you can enjoy summer sunsets with wine or beer in hand.

The stone kitchen has a high end feel with luxe benchtops, integrated refrigerator, built-in microwave and stainless steel appliances. Both bedrooms are equipped with built-in robes and are in close proximity to the gorgeous bathroom, meanwhile further embrace a European laundry, ducted heating and cooling, secure intercom, secure car space. Free access to RekDek with a gymnasium, 25m indoor heated lap pool, spa, steam room, and sauna. Building amenities include a

library, business center, outdoor herbs garden with BBQ machine, on-site gym, and free under covered visitors car parking.

Surrounded by green parklands offer public BBQ facility, you'll love this stunning Yarra's Edge precinct close to South Wharf Promenade with restaurants and bars, local eateries including Bangpop, and Munich Brauhaus just to name a few. You're also not far from DFO shopping, Crown Casino, Southbank Promenade, great Southbank, CBD, and South Melbourne attractions, trams, and Southern Cross Station.

**\$500 per week**

**Contact:** Baden Lucas  
03 9645 1199  
0418 888 751  
Aleisha Clark  
03 9645 1199  
0491 174 507

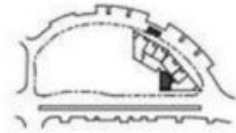
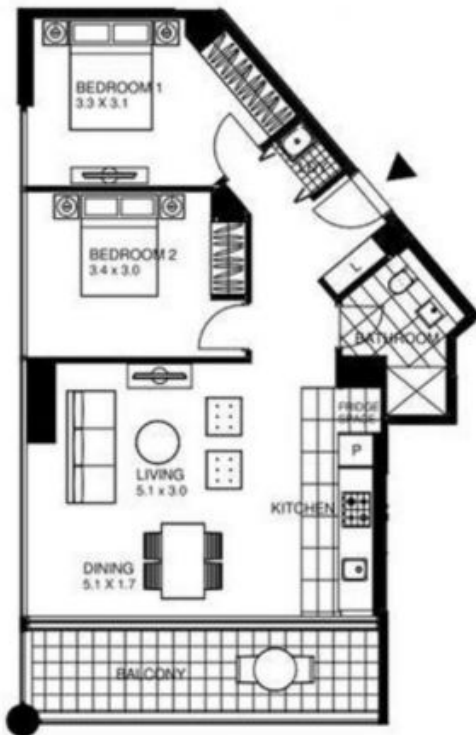
**Type:** Apartment

**Date Available:** 09/10/2021

**Leased Date:** 05/11/2021

**Bond:** \$2173

**<https://www.resbymirvac.com>**



### LOCATION PLAN

#### 2 Bedroom Apartment

INTERNAL AREA - 79 m<sup>2</sup>  
BALCONY AREA - 12 m<sup>2</sup>



TOWER 8  
YARRAS EDGE  
Apartment 7.07  
Apartment 8.07  
Apartment 9.07  
Apartment 10.07  
Apartment 11.07  
Apartment 12.07

Plans shown are only indicative of layout. Dimensions are approximate.

**DOCKLANDS, VIC**  
2006/1 Point Park Crescent