



Glebe, NSW

306/2 Scotsman Street

1
BED

1
BATH



Oversized 1-Bedroom Apartment with Study Nook in Harold Park

This 66sqm, 3rd floor Apartment features:

- Large bedroom with built-in wardrobe
- Open-plan living and dining area
- Modern kitchen with Miele appliances
- Sleek bathroom with plenty of storage
- Internal laundry with washer and dryer included
- Study nook, perfect for a home office
- Secure storage cage included
- Ducted A/C, video intercom and NBN connectivity
- 300m to the Tramsheds, light rail station and public transport

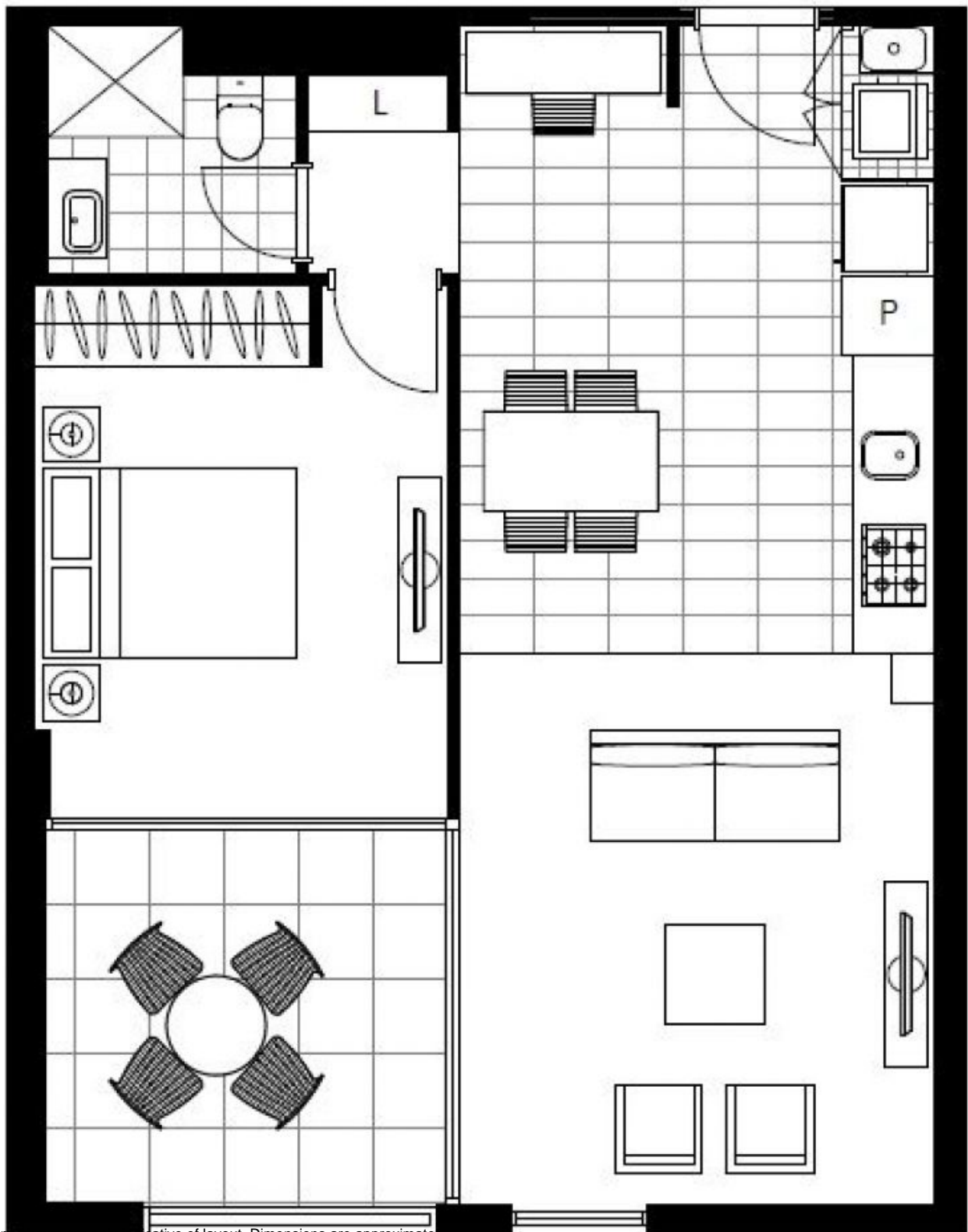
More apartments available!

Contact: Carmen Whiteley
02 8588 8888
0497 555 519
Alex Bohmwald
02 8588 8888
0431 111 104

Type: Apartment

Date Available: 12/10/2021

<https://www.resbymirvac.com>



Plans shown are only indicative of layout. Dimensions are approximate.

Glebe, NSW
306/2 Scotsman Street