



AINTREE, VIC

77 Wireless Drive

4
BED

3
BATH

2
CAR



NEWLY ESTABLISHED 4 bedroom Woodlea townhouse

*Inspection Code: 9645

Quality is paramount in this superb four bedroom townhouse boasting prime location within the Woodlea Estate.

Melding the best of contemporary design and open spaces, this quality family home comprises,

1st floor guest suite comprising of bedroom and ensuite
Master suite including WIR, sleek ensuite and balcony
Kitchen with island bench and walk-in pantry
900mm cooktop and oven and integrated dishwasher
Landscaped courtyard ? perfect for entertaining

\$430 per week

Contact: Aleiasha Clark
03 9645 1199
0491 174 507

Type: Townhouse

Date Available: 30/09/2021

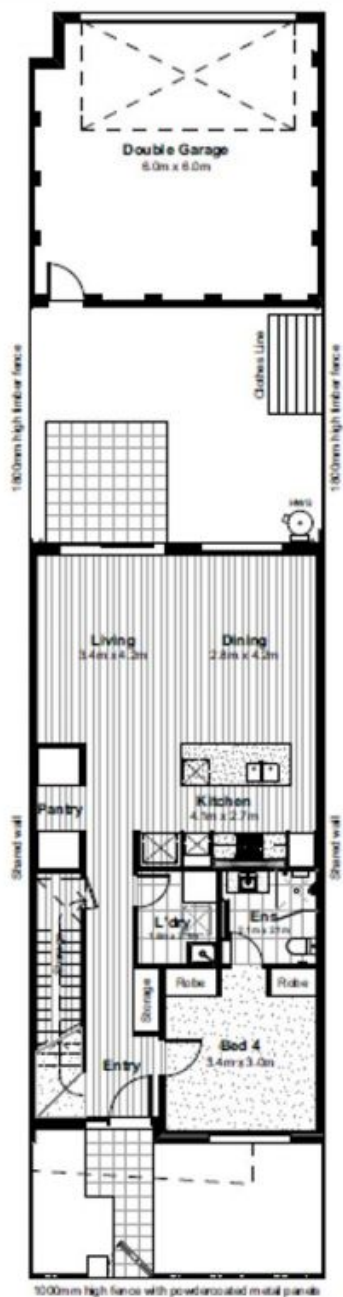
Leased Date: 08/10/2021

Bond: \$1868

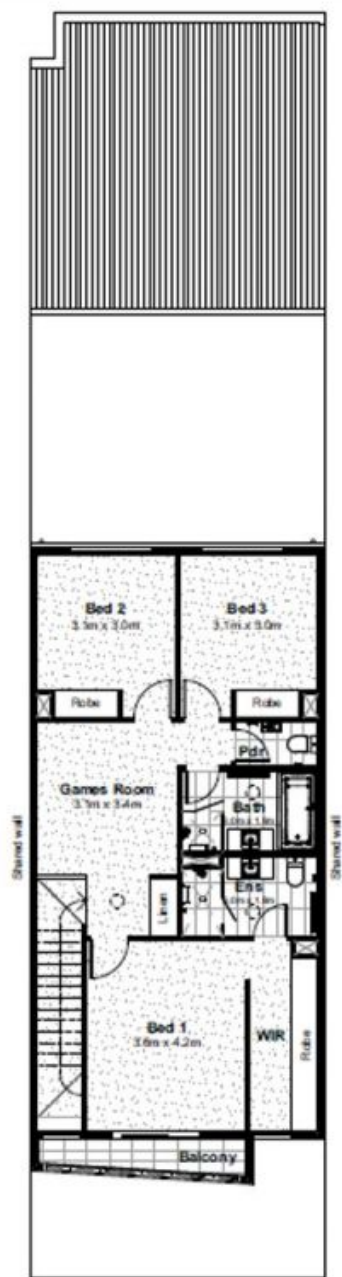
<https://www.resbymirvac.com>

Area Schedule

Land	181.5m ²
Total Living	170.7m ²
Garage	41.6m ²
Balcony	4.2m ²



Ground Floor



First Floor

Plans shown are only indicative of layout. Dimensions are approximate.

AINTREE, VIC
77 Wireless Drive