

Glebe, NSW
5601/148 Ross Street

1
BED

1
BATH



Contemporary 1-Bedroom Apartment in Heart of Harold Park, Glebe

Due to current NSW COVID - 19 orders, inspections of our properties are available ONLY by private inspections.

A limit of 1 person per inspection applies together with mandatory mask wearing. Virtual tours also available via appointment.

Please contact our leasing agent on 0497 555 519 to inspect this apartment.

Call to book your inspection!

Contact: Carmen Whiteley
02 8588 8888
0497 555 519

Type: Apartment

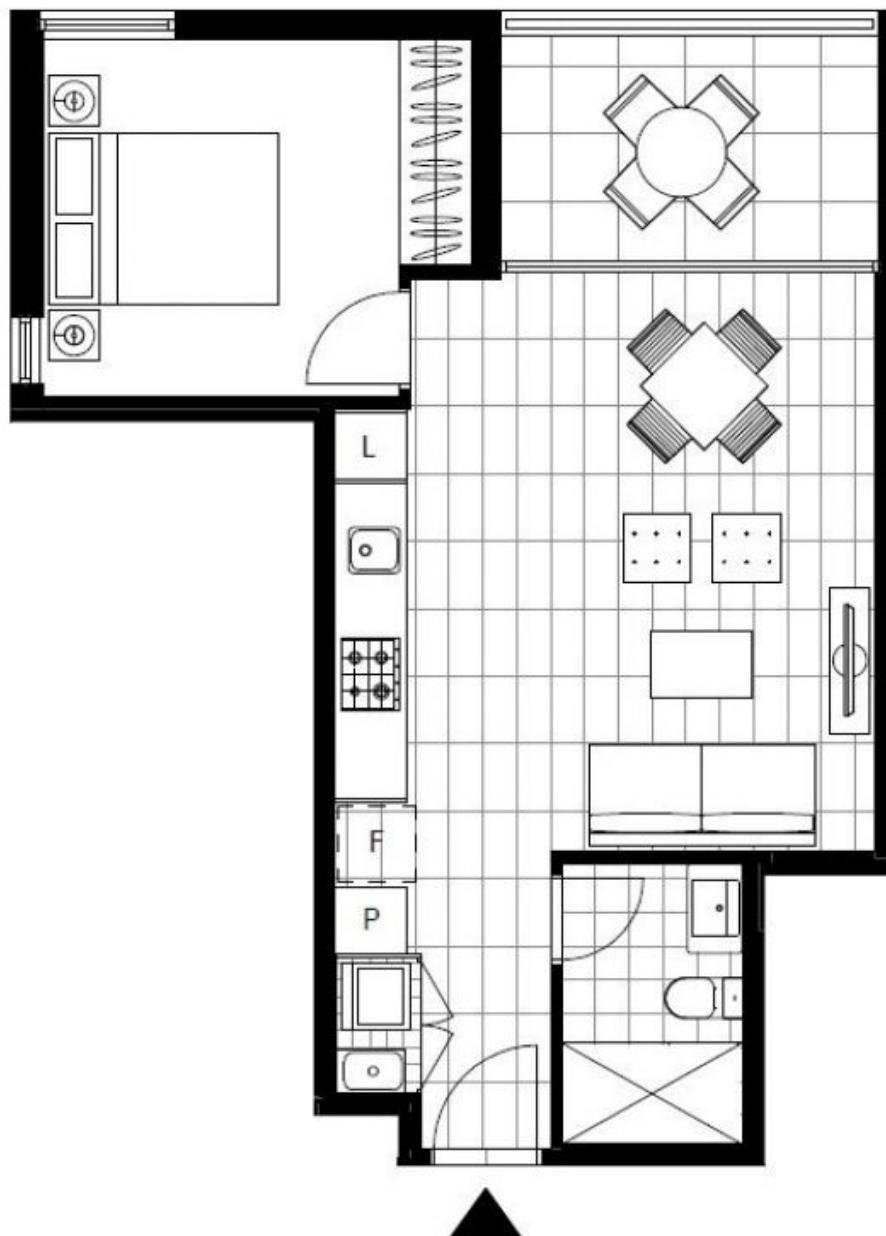
Date Available: 15/09/2021

Bond: \$1980

<https://www.resbymirvac.com>

This 52sqm, 6th floor apartment features:

- Spacious bedroom with built-in wardrobes
- Open-plan living and dining area, flowing onto internal garden facing balcony



Plans shown are only indicative of layout. Dimensions are approximate.

Glebe, NSW
5601/148 Ross Street