



Bondi, NSW

5510/34 Wellington Street

1
BED

1
BATH



Bright Garden Facing 1 Bedroom Apartment in 'The Moreton', Bondi

Due to current NSW COVID - 19 orders, inspections of our properties are available ONLY by private inspections.

A limit of 1 person per inspection applies together with mandatory mask wearing. Virtual tours also available via appointment.

Please contact our leasing agent on 0401 545 440 to inspect this apartment.

\$790 per week

Contact: Naz Sabzpouri
02 8588 8888
0401 545 440

Type: Apartment

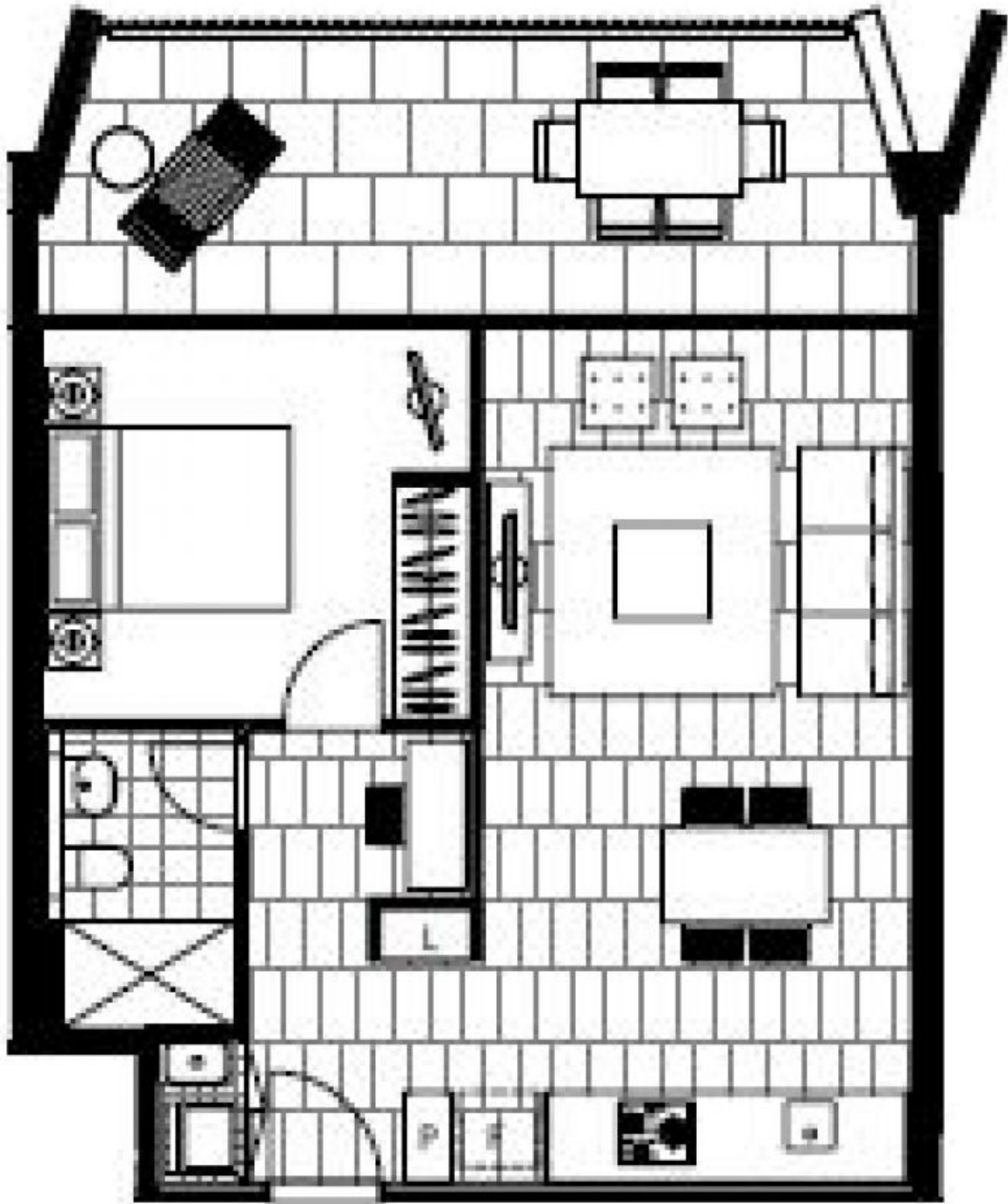
Date Available: 18/10/2021

Bond: \$3160

<https://www.resbymirvac.com>

This 67sqm, North facing apartment features:

- Spacious bedroom with built-in wardrobes
- Tiled open-plan living and dining area, flowing onto balcony
- Stylish kitchen with stone benchtops and built-in Miele appliances



Plans shown are only indicative of layout. Dimensions are approximate.

Bondi, NSW
5510/34 Wellington Street