

**Glebe, NSW**  
408/86 Wigram Road

**2** BED **2** BATH **1** CAR 

**Oversized North Facing 2-Bedroom Apartment with Parking in Harold Park**

Due to current NSW COVID - 19 orders, inspections of our properties are available ONLY by private inspections.

A limit of 1 person per inspection applies together with mandatory mask wearing. Virtual tours also available via appointment.

Please contact our leasing agent on 0401 545 440 to inspect this apartment.

**Deposit Taken !**

**Contact:** Naz Sabzpouri  
02 8588 8888  
0401 545 440

**Type:** Apartment

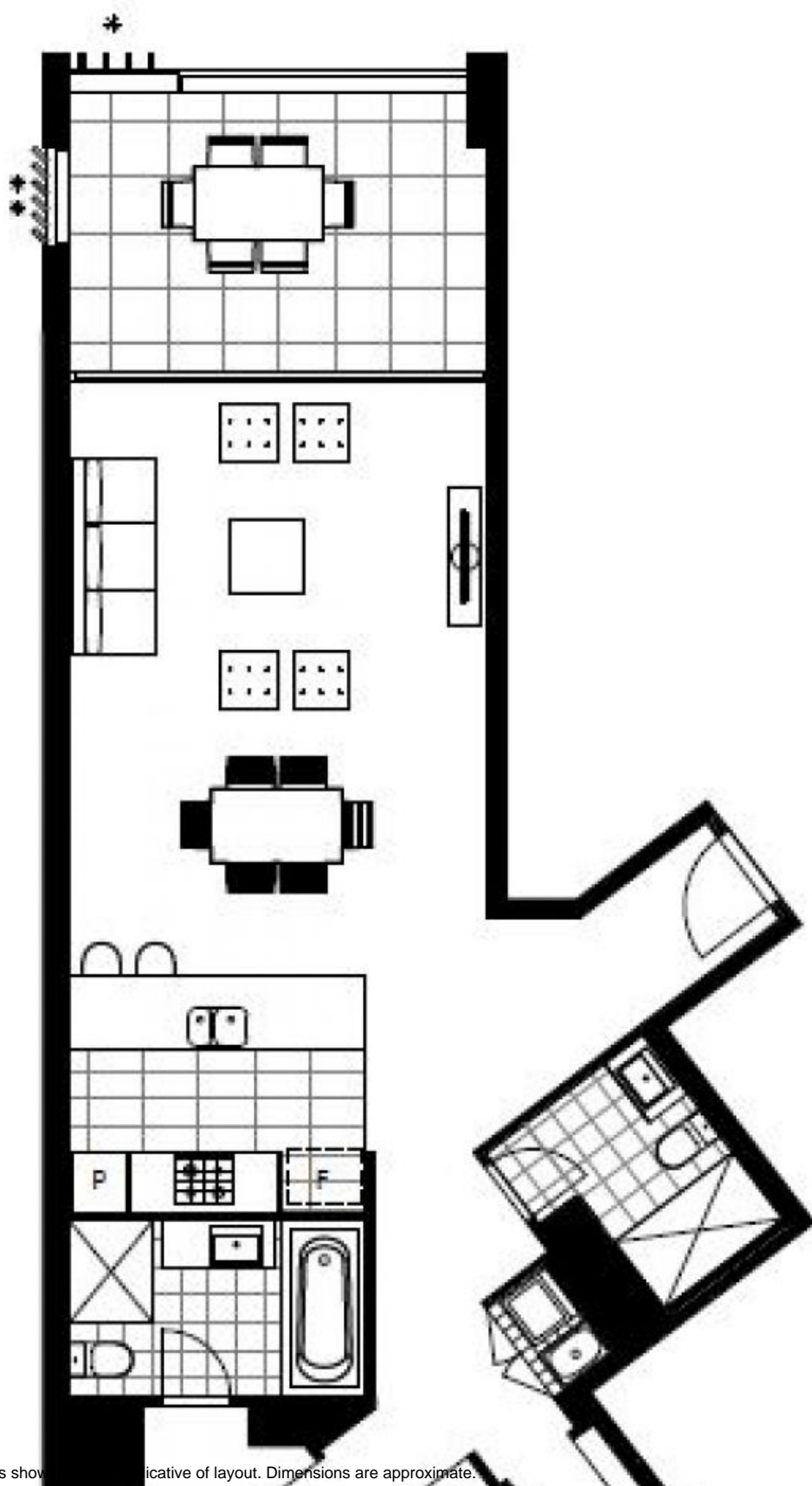
**Date Available:** 13/08/2018

**Bond:** \$3400

<https://www.resbymirvac.com>

This 121sqm, 4th floor apartment features:

- Generously appointed bedrooms with built-in wardrobes, private balcony off master
- Open-plan living and dining area, flowing onto North facing entertainers' balcony



Plans show indicative of layout. Dimensions are approximate.

**Glebe, NSW**  
408/86 Wigram Road