



Glebe, NSW

418/19 Minogue Crescent

2 BED **2** BATH **1** CAR 

Contemporary North Facing 2-Bedroom Apartment with Parking in Glebe

Due to current NSW COVID - 19 orders, inspections of our properties are available ONLY by private inspections.

A limit of 1 person per inspection applies together with mandatory mask wearing. Virtual tours also available via appointment.

Please contact our leasing agent on 0497 555 519 to inspect this apartment.

This spacious 93sqm apartment features:

- Oversized bedrooms with built-in wardrobes
- Functional open-plan living and dining area, flowing onto entertainers' balcony

More apartments available!

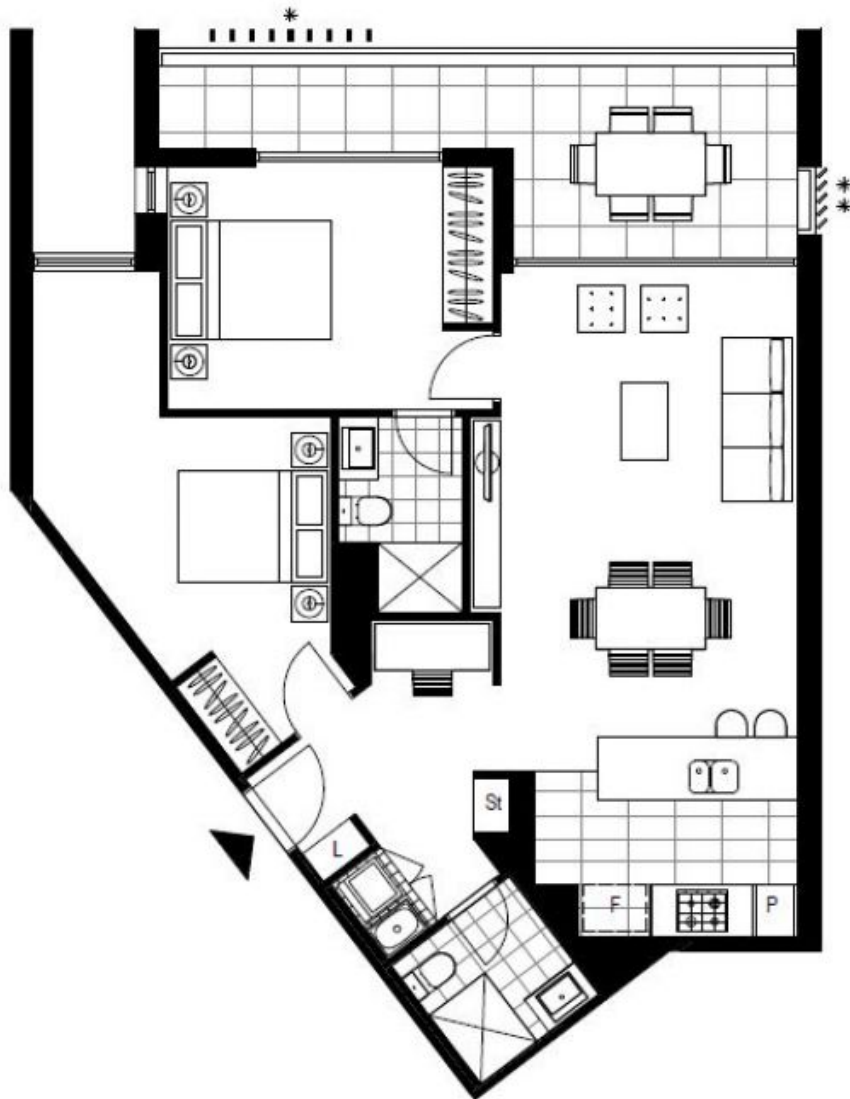
Contact: Carmen Whiteley
02 8588 8888
0497 555 519

Type: Apartment

Date Available: 16/09/2021

Bond: \$3000

<https://www.resbymirvac.com>



Plans shown are only indicative of layout. Dimensions are approximate.

Glebe, NSW
418/19 Minogue Crescent