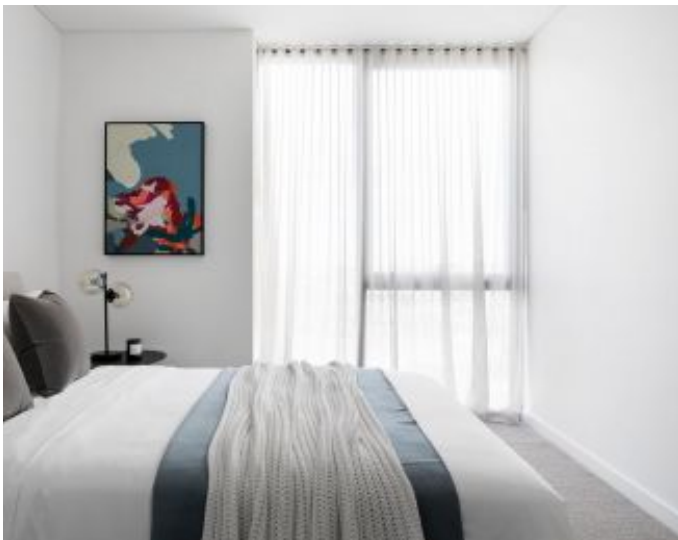


BRAND NEW

1 BEDROOM  
APARTMENTS +  
PARKING

from \$440 per week

To register your interest, please  
call Andrew on 0490 816 861  
or email



**DOCKLANDS, VIC**  
1 Bedroom/103 South Wharf

**1** **1** **1** **RES**  
BED BATH CAR

**Premium 1-Bedroom Apartments with Parking in Newly Built & Voyager by Mirvac**

Welcome to Voyager by Mirvac

A true lifestyle address, 'Voyager' is the tallest, newest and most prestigious building in the Yarra's Edge precinct. Summoning an immediate sense of contemporary style, it boasts impeccably appointed interiors that are as generous as they are light-filled. Floor-to-ceiling glass windows promise spectacular views while the balcony provides the perfect spot for alfresco dining. Central to the CBD, Southbank and Port Melbourne, it enjoys its own sense of community while being well-connected to key city attractions. The Wharf Club health and wellness centre (free for residents) is the ultimate place to keep in shape, while waterfront walkways, green spaces and local shops, cafes and restaurants culminate in a lively yet relaxed environment in which to live and thrive.

**From \$440 per week**

**Contact:** Baden Lucas  
03 9645 1199  
0418 888 751  
Aleisha Clark  
03 9645 1199  
0491 174 507

**Type:** Apartment

**Date Available:** 20/09/2021

**Leased Date:** 11/01/2022

**Bond:** \$1911

<https://www.resbymirvac.com>



Plans shown are only indicative of layout. Dimensions are approximate.

**DOCKLANDS, VIC**  
1 Bedroom/103 South Wharf