



Sydney Olympic Park, NSW

22008/2 Figtree Drive

1
BED

1
BATH



Brand New 1-Bedroom Apartment in 'Pavilions' by Mirvac

Due to current NSW COVID - 19 orders, inspections of our properties are available ONLY by private inspections.

A limit of 1 person per inspection applies together with mandatory mask wearing. Virtual tours also available via appointment.

Please contact our leasing agent on 0459 222 085 to inspect this apartment.

This 61sqm, 20th floor apartment features:

- Contemporary kitchen with stone benchtop and built-in European appliances
- Large bedroom with built-in wardrobe

\$430 per week

Contact:

Christine Howison

02 8588 8888

0459 222 085

Georgia Glynn

02 8588 8888

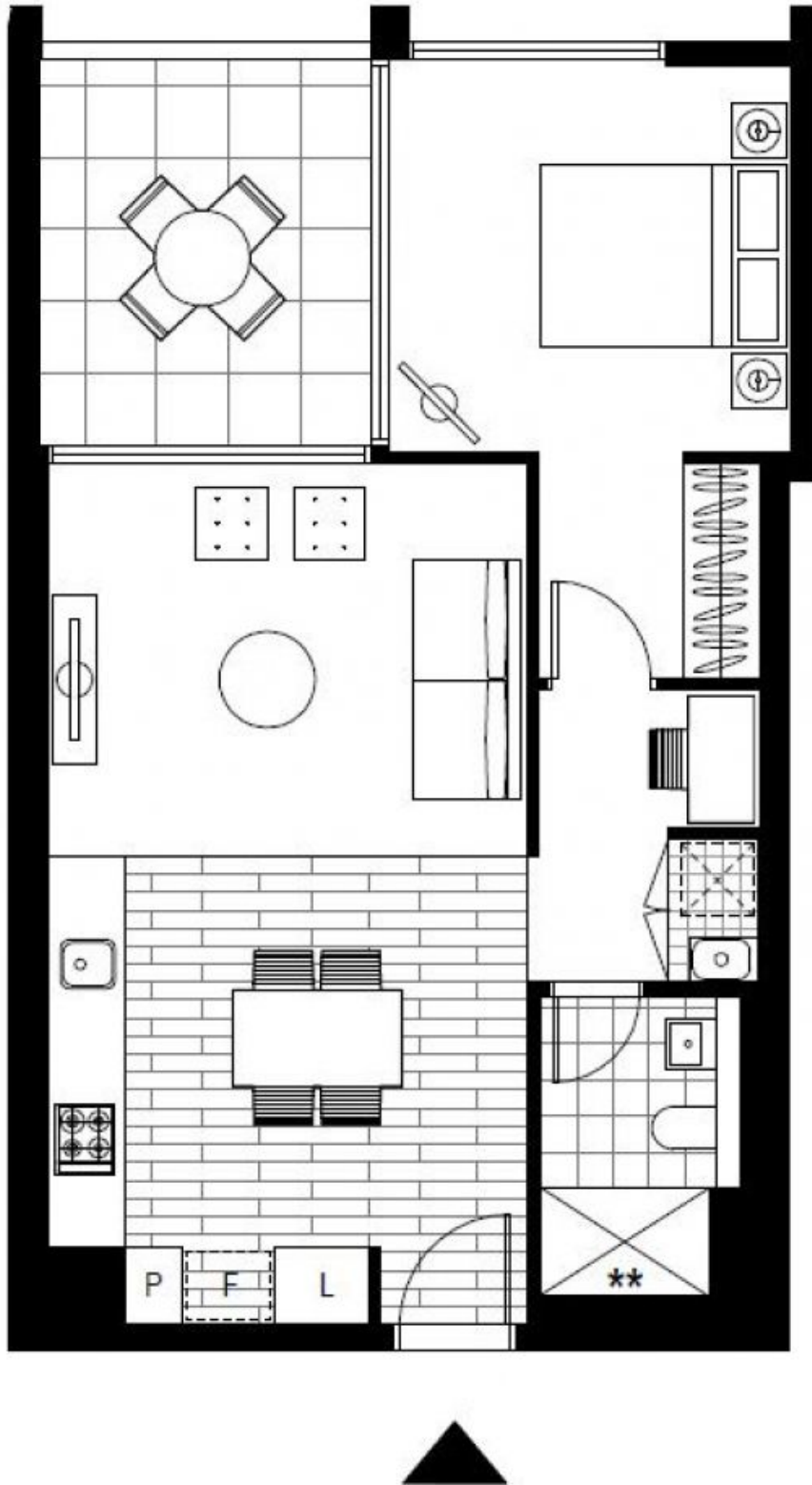
0481 388 777

Type: Apartment

Date Available: 15/09/2021

Bond: \$1720

<https://www.resbymirvac.com>



Plans shown are only indicative of layout. Dimensions are approximate.

Sydney Olympic Park, NSW
22008/2 Figtree Drive