

## Sydney Olympic Park, NSW

21909/2 Figtree Drive

**1**  
BED

**1**  
BATH



### Level 19, 1-Bedroom Apartment in Sydney Olympic Park

Due to current NSW COVID - 19 orders, inspections of our properties are available ONLY by private inspections.

A limit of 1 person per inspection applies together with mandatory mask wearing.

Please contact our leasing agent on 0459 222 085 to inspect this apartment.

This near-new, 59sqm apartment features:

- Well appointed bedroom with built-in wardrobes
- Open-plan living and dining area, with access to private North facing balcony

**\$430 per week**

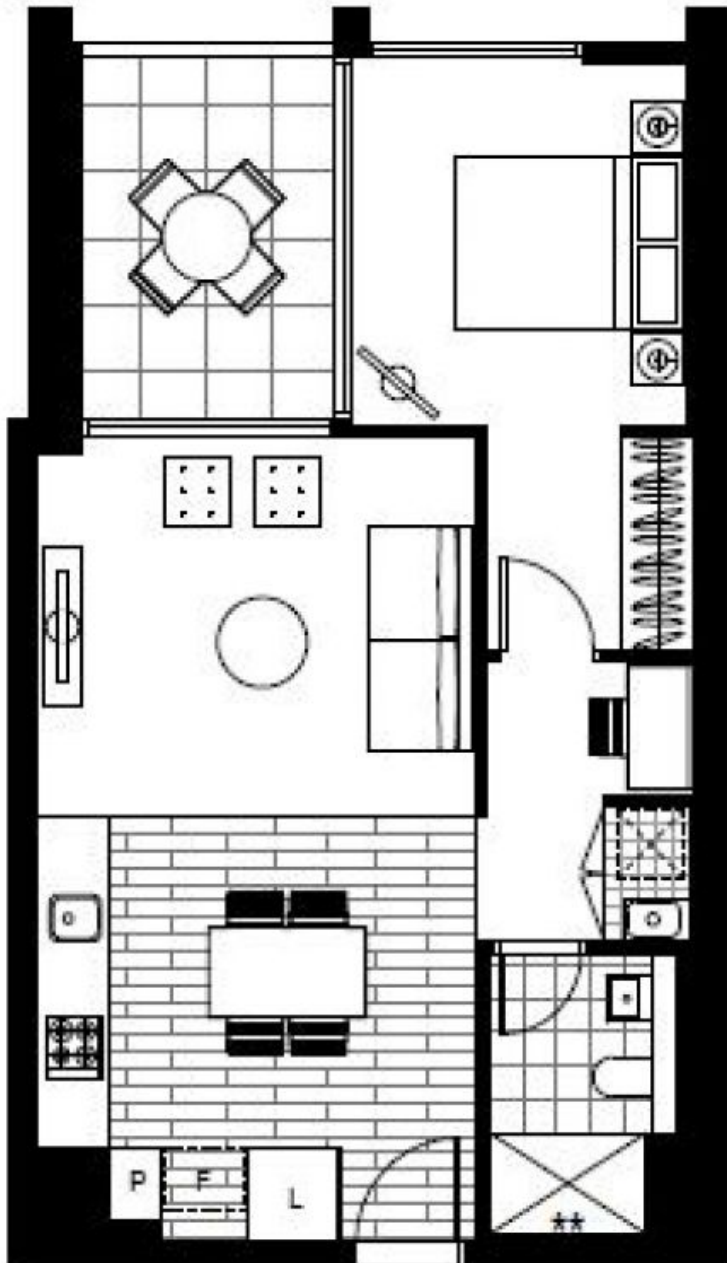
**Contact:** Christine Howison  
02 8588 8888  
0459 222 085  
Georgia Glynn  
02 8588 8888  
0481 388 777

**Type:** Apartment

**Date Available:** 26/08/2021

**Bond:** \$1720

<https://www.resbymirvac.com>



Plans shown are only indicative of layout. Dimensions are approximate.

**Sydney Olympic Park, NSW**  
21909/2 Figtree Drive