



Glebe, NSW
401/147 Ross Street

1 BED **1** BATH

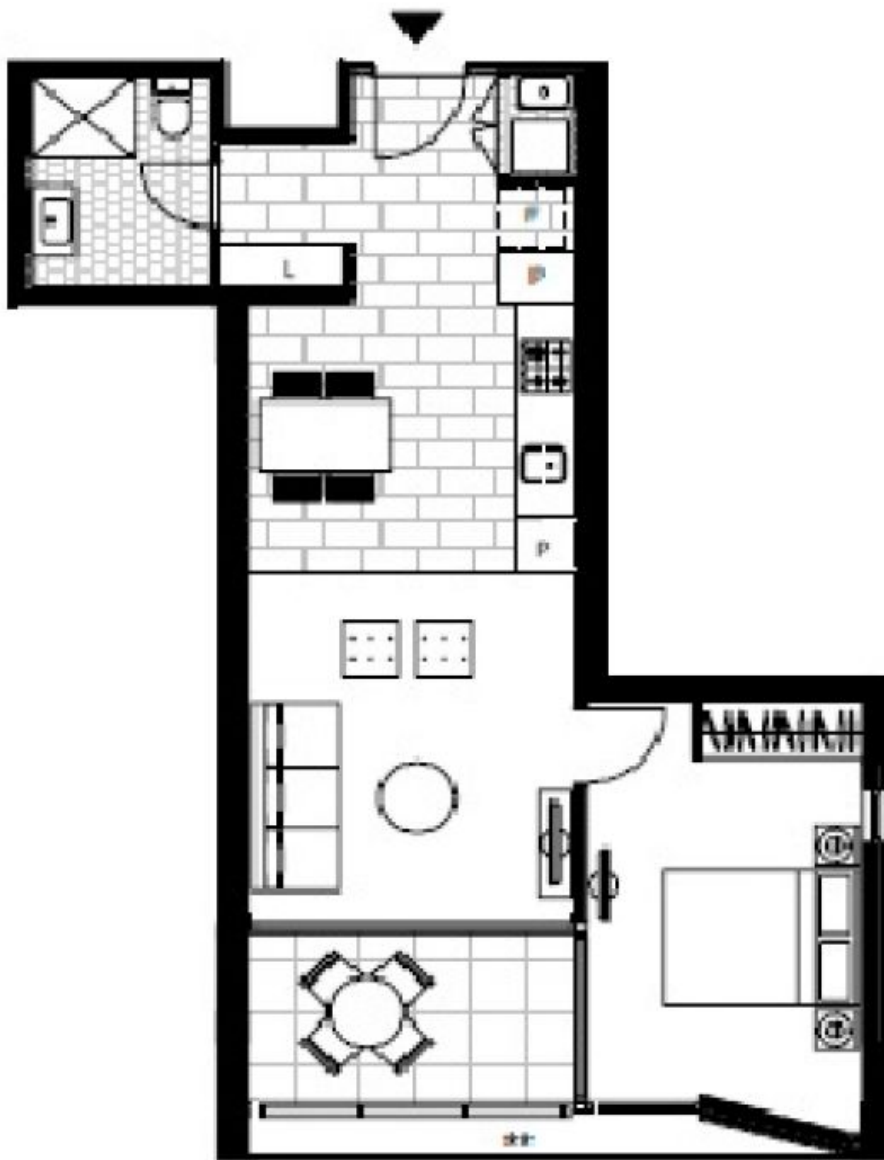


Parkside 1-Bedroom Apartment in Harold Park, Glebe
Due to current NSW COVID - 19 orders, inspections of our properties are available ONLY by private inspections.
A limit of 1 person per inspection applies together with mandatory mask wearing.
Please contact our leasing agent on 0401 545 440 to inspect this apartment.

This spacious 57sqm apartment features:

- Well-appointed bedroom with built-in wardrobe
- Flowing open-plan living and dining area, with access to balcony
- Modern kitchen with stone benchtop and built-in Miele appliances
- Contemporary bathroom with plenty of vanity storage

Deposit Taken!
Contact: Naz Sabzpouri
02 8588 8888
0401 545 440
Type: Apartment
Date Available: 03/09/2021
Bond: \$2000
<https://www.resbymirvac.com>



Plans shown are only indicative of layout. Dimensions are approximate.

Glebe, NSW
401/147 Ross Street