



DOCKLANDS, VIC
702/103 South Wharf Drive

2 BED **2** BATH **1** CAR



Contemporary lifestyle living in the Yarra's Edge 'Voyager' tower

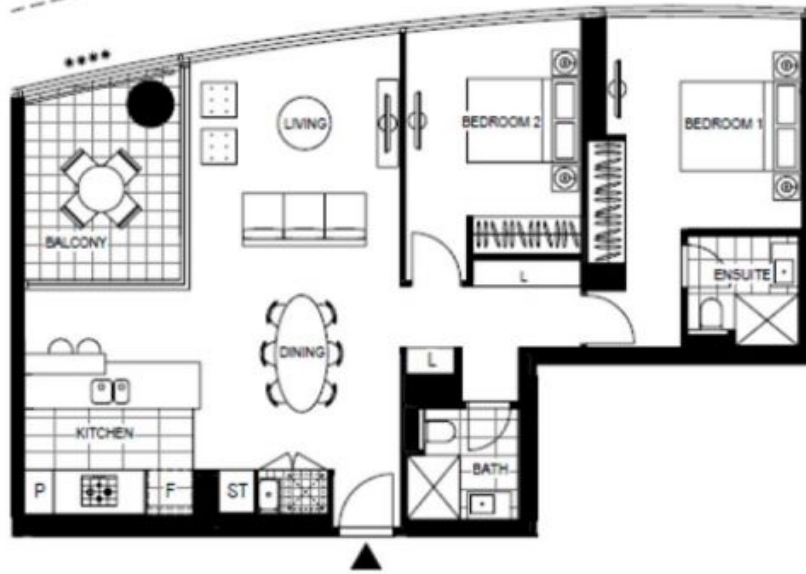
Inspection code; 9645

A part of the tallest, newest and most prestigious building in the Yarra's Edge precinct, this Mirvac-built 'Voyager' apartment is set to impress. Embracing a sleek and stylish aesthetic, it has been designed with an emphasis on generous light-filled interiors and seamless open plan indoor/outdoor entertaining. Floor-to-ceiling glass windows capture sweeping city views that sparkle day and night. It enjoys a lively village atmosphere while being wonderfully central to Melbourne CBD, Southbank and Port Melbourne. Keep in shape by wandering the waterfront walkways, playing in the green spaces or working out at the Wharf Club health and wellness centre (with a free membership for residents) or indulge in vibrant shopping and dining at local shops and eateries. As peaceful as it is pristine, this apartment promises next-level living.

\$630 per week

Contact: Baden Lucas
03 9645 1199
0418 888 751
Aleisha Clark
03 9645 1199
0491 174 507

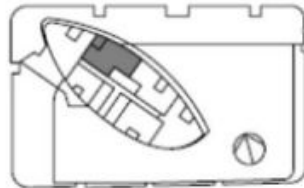
Type: Apartment
Date Available: 02/10/2021
Leased Date: 22/10/2021
Bond: \$2737
<https://www.resbymirvac.com>



LEVEL 7, 8

****APT 7.02
****APT 8.02

LOCATION PLAN



TOWER 2 BEDROOM APARTMENT

Internal Area 91 m²
Balcony Area 9 m²
Total Area 100 m²

Area subject to final survey, area includes balcony and/or terrace where applicable. It includes parking and external storage area.



IMPORTANT NOTES:

Please note that this floor plan was produced prior to completion of Construction. The information contained herein is believed to be correct but is not guaranteed. Dimensions and areas are approximate and areas are calculated in accordance with the Property Council of Australia Method of Measurement. Floor plans do not show additional features within each lot such as: hot water systems, window vents, blinds/curtains and lifts and their location walls. Purchaser colour based on floor plans is located on walls only and is available at purchaser's sole risk at time of sale. Changes will undoubtedly be made during development and subject to change without notice in accordance with the provisions of the contract for sale. Special condition 10 of the contract for sale includes further information in relation to the use of this lot to be considered. The furniture and fixtures included are not included with any sale and the drawings should not be taken to indicate the final position of ground joints, TV connection points and the like, prospective purchasers must refer to the contract for sale for the list of inclusions. All graphics, including the layout, illustrations, drawings, fixtures and sun-shading devices, are provided as a guide only and are not to be relied on as a representation of the final product. Subheads necessary for sections are not depicted. (8/11/2015) (A)

**** Strzelecki

For further enquiries call 03 9695 9400 or visit Voyager.mirvac.com



Voyager

Plans shown are only indicative of layout. Dimensions are approximate.

DOCKLANDS, VIC
702/103 South Wharf Drive