

**Sydney Olympic Park, NSW**  
10506/2 Figtree Drive

**1** BED **1** BATH



**Stunning North-Facing 1-Bedroom Apartment in Sydney Olympic Park**

Due to current NSW COVID - 19 orders, inspections of our properties are available ONLY by private inspections. A limit of 1 person per inspection applies together with mandatory mask wearing. Video Tour of apartment included. Please contact our leasing agent on 0459 222 085 to inspect this apartment.

This 59sqm, 1-Bedroom Apartment apartment features:

- Oversized bedroom with built-in wardrobe
- Study nook off bedroom, great for a home office
- Flowing open-plan living and dining area, with access to North-facing balcony

**\$420 per week**

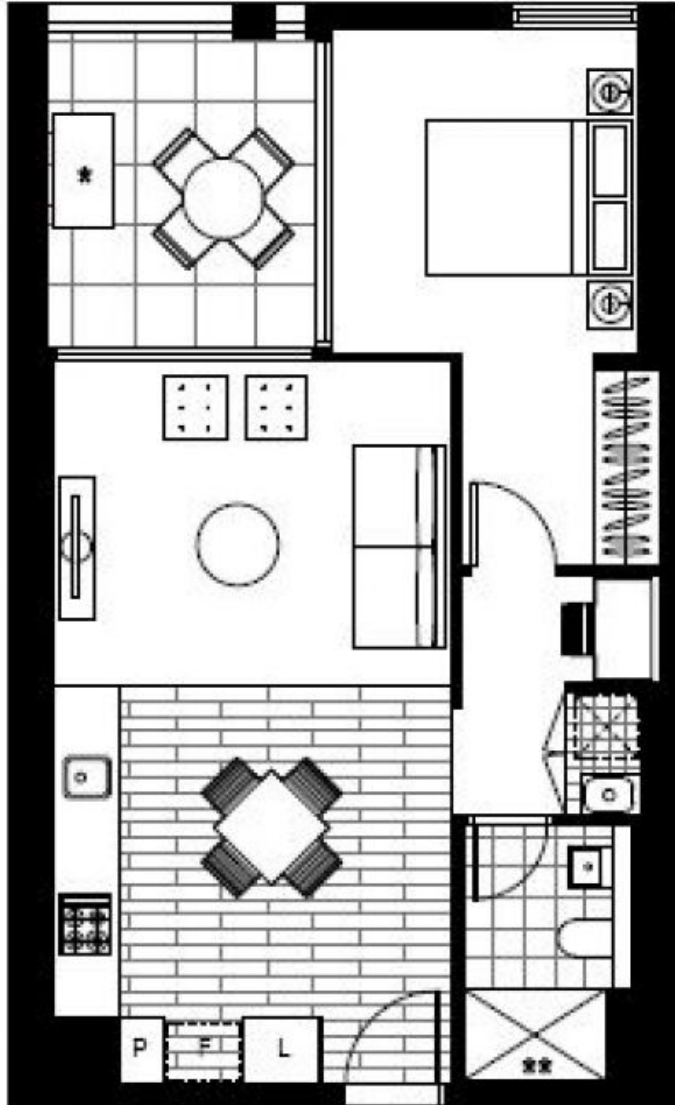
**Contact:** Christine Howison  
02 8588 8888  
0459 222 085  
Georgia Glynn  
02 8588 8888  
0481 388 777

**Type:** Apartment

**Date Available:** 24/08/2021

**Bond:** \$1680

<https://www.resbymirvac.com>



Plans shown are only indicative of layout. Dimensions are approximate.

**Sydney Olympic Park, NSW**  
10506/2 Figtree Drive