

Sydney Olympic Park, NSW

10506/2 Figtree Drive

1
BED

1
BATH



Stunning North-Facing 1-Bedroom Apartment in Sydney Olympic Park

Due to current NSW COVID - 19 orders, inspections of our properties are available ONLY by private inspections.

A limit of 1 person per inspection applies together with mandatory mask wearing. Video Tour of apartment included.

Please contact our leasing agent on 0459 222 085 to inspect this apartment.

This 59sqm, 1-Bedroom Apartment apartment features:

- Oversized bedroom with built-in wardrobe
- Study nook off bedroom, great for a home office
- Flowing open-plan living and dining area, with access to North-facing balcony

\$420 per week

Contact:

Christine Howison

02 8588 8888

0459 222 085

Georgia Glynn

02 8588 8888

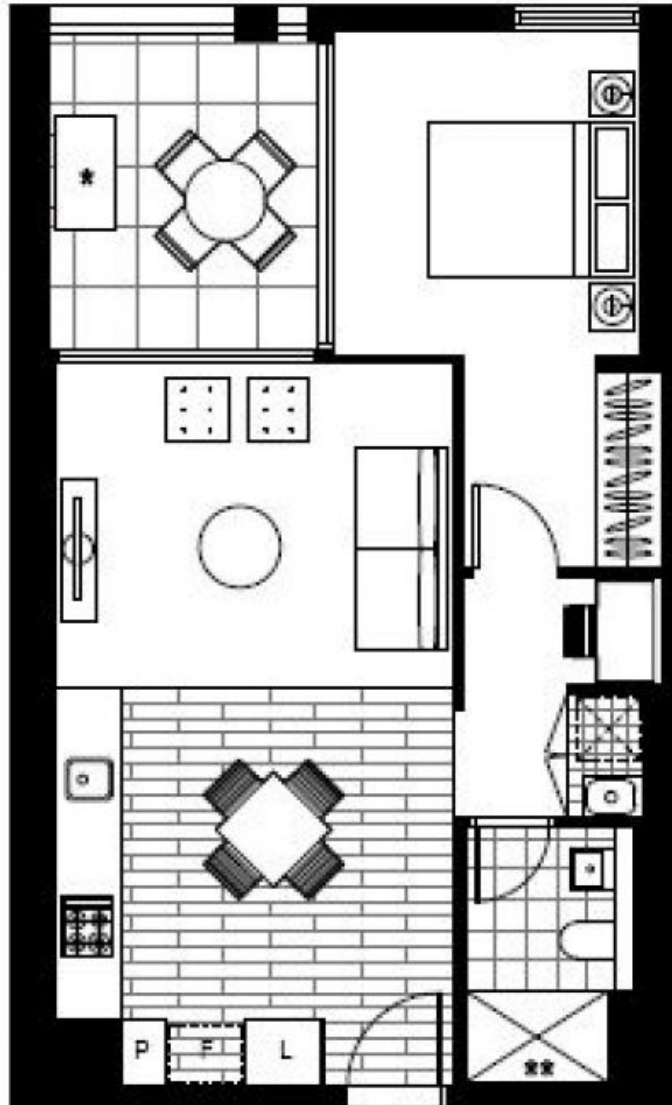
0481 388 777

Type: Apartment

Date Available: 24/08/2021

Bond: \$1680

<https://www.resbymirvac.com>



Plans shown are only indicative of layout. Dimensions are approximate.

Sydney Olympic Park, NSW
10506/2 Figtree Drive