



St Leonards, NSW
2609/472 Pacific Highway

2 BED **2** BATH **1** CAR



Under Contract

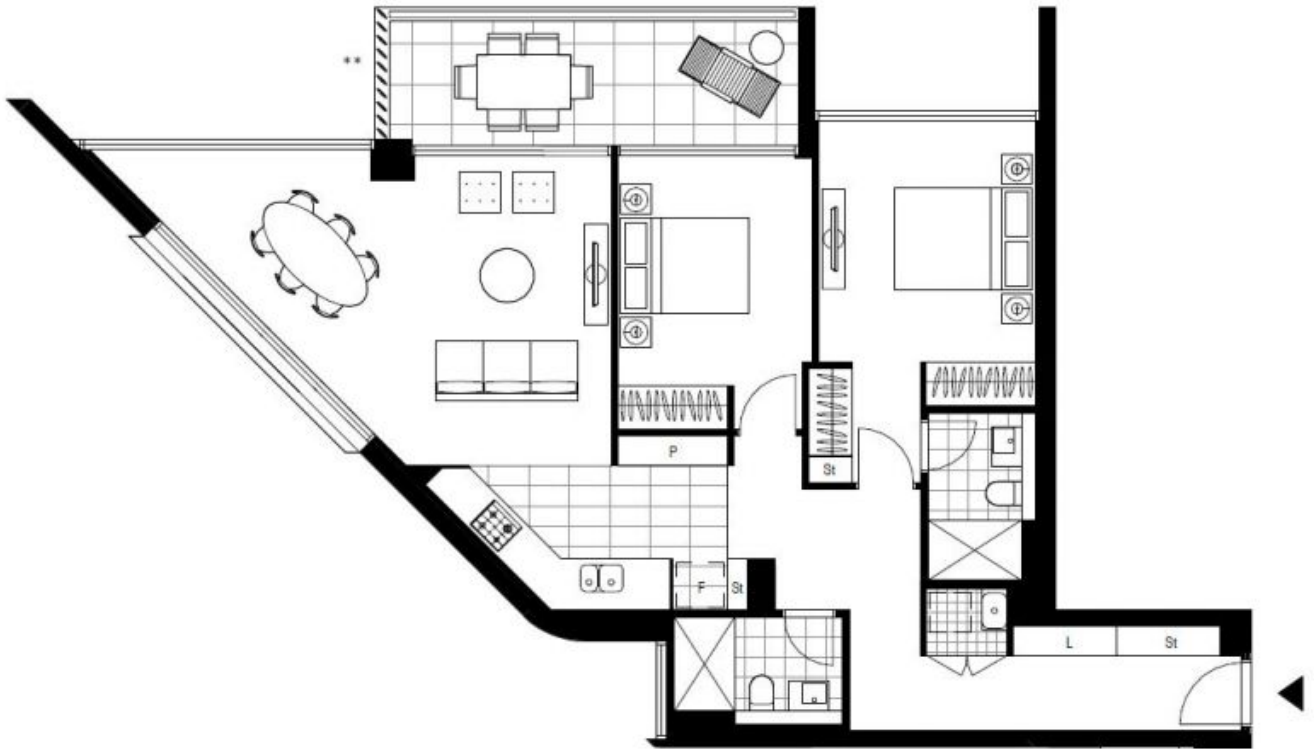
Perched on the 26th floor of the William Building, this sumptuous sky-home promises a divine executive lifestyle central to St Leonards train station and the heart of vibrant Crows Nest. It basks in a sun-drenched north aspect and enjoys an open plan indoor/outdoor design and expansive district views. Resort-style facilities complete the picture of utter luxury.

Functional layout, long entrance hall, floor-to-ceiling glass
Open plan kitchen and spacious living/dining flowing out
Stone bench tops, gas Miele appliances plus dishwasher
Balcony with far-reaching views ideal for alfresco dining
Bedrooms with built-ins, fully tiled bathrooms plus laundry
Ducted air conditioning, secure parking with lift access

Sold

Council Rates: \$352/qtr (approx)
Strata Rates: \$2,077/qtr (approx)
Contact: Emily Seymour
02 8588 8888
0497 333 559
William Kwok
0285888888
0481 702 370

Type: Apartment
Sold Date: 02/03/2022
<https://www.resbymirvac.com>



Plans shown are only indicative of layout. Dimensions are approximate.

St Leonards, NSW
2609/472 Pacific Highway