



DONCASTER, VIC
4 Cellar Way

4 BED **2** BATH **2** CAR 

Brand new 4 bedroom townhouse in sought after Tullamore Estate

*Inspection code: 9645

Tullamore is set to elevate the lifestyle of its residents, with lush parkland on its doorstep; where style, privacy and timeless design blends with nature, beauty and freedom. Unique, exclusive and limited, this is a lifestyle of distinction.

Townhouse features:

- ? Bespoke design, quality construction and finishes
- ? 2 Car Garage with internal access
- ? Stainless steel Miele appliances including integrated dishwasher, oven, rangehood, cooktops

\$830 per week

Contact: Baden Lucas
03 9645 1199
0418 888 751
Aleisha Clark
03 9645 1199
0491 174 507

Type: Townhouse
Date Available: 30/07/2021
Leased Date: 31/07/2021
Bond: \$3607
<https://www.resbymirvac.com>

Anderson , Type A
Lot M622
Cellar Way

4 Bedrooms

Ground Floor	84.8 m ²
First Floor	107.2 m ²
Porch	4.7 m ²
Garage	42.5 m ²
Total Area	239.1 m ²

0 1 2 4m

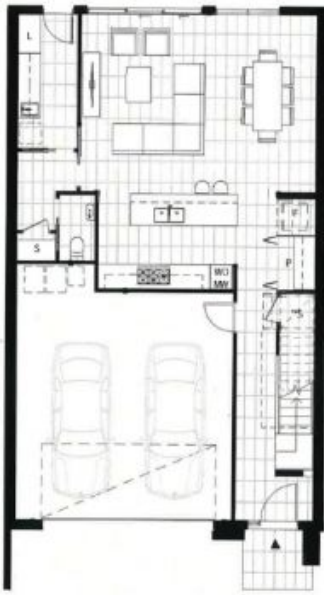
Areas subject to final survey, area includes balconies and/or service where applicable. 1 includes parking and external storage areas.

LOCATION PLAN



Note - Please note that this document is a guide only and was prepared prior to completion. The information contained herein is believed to be correct but is not guaranteed. Owners are indicative and purchasers should view fixtures on colour sample board. Dimensions are approximate and errors are calculated in accordance with the Property Council of Australia method of Measurement. Changes will undoubtedly be made during the development and dimensions, areas, fittings, and fixtures and specifications are subject to change without notice in accordance with the provisions of the contract of sale.

- * Void
- ** Non-Trafficable Roof
- **S Low Height Freight Storage



GROUND FLOOR



FIRST FLOOR

Plans shown are only indicative of layout. Dimensions are approximate.

DONCASTER, VIC
4 Cellar Way