



Zetland, NSW

202/6 Ebsworth Street

1
BED

1
BATH



Oversized 1-Bedroom Apartment near Green Square Station

Due to current NSW COVID - 19 orders, inspections of our properties are available ONLY by private inspections.

Contact our leasing agent on 0497 555 519 to inspect this apartment.

A limit of 1 person per inspection applies together with mandatory mask wearing.

This modern, 60sqm Apartment features;

- Large bedroom with floor to ceiling built-in wardrobe
- Open-plan living and dining area flowing onto balcony
- Modern kitchen with stone benchtop and built-in appliances
- South-West facing balcony with access from living area

More apartments available!

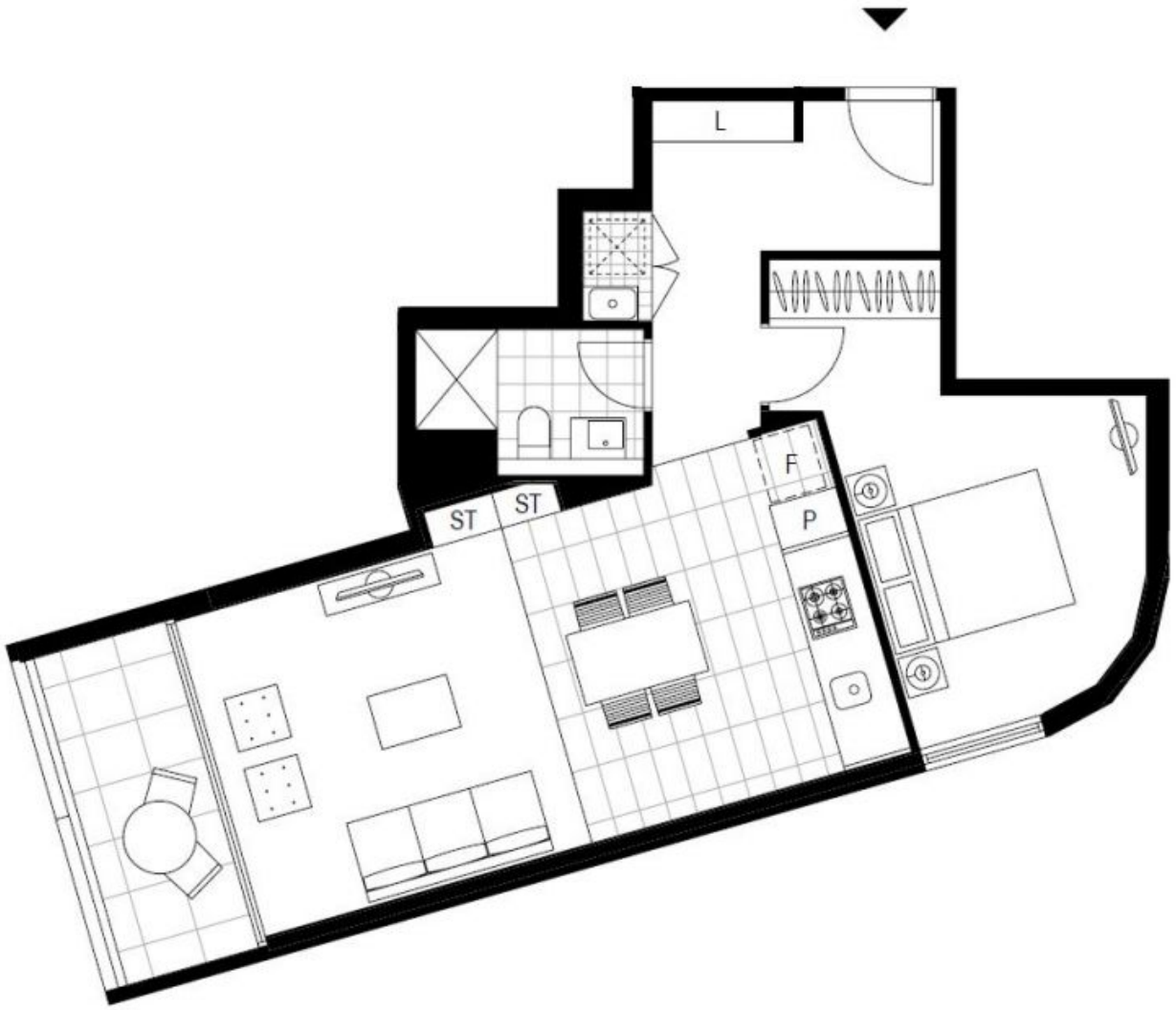
Contact: Carmen Whiteley
02 8588 8888
0497 555 519

Type: Apartment

Date Available: 01/07/2021

Bond: \$2060

<https://www.resbymirvac.com>



Plans shown are only indicative of layout. Dimensions are approximate.

Zetland, NSW
202/6 Ebsworth Street