



## Zetland, NSW

202/6 Ebsworth Street

**1**  
BED

**1**  
BATH



### Oversized 1-Bedroom Apartment near Green Square Station

Due to current NSW COVID - 19 orders, inspections of our properties are available ONLY by private inspections.

Contact our leasing agent on 0497 555 519 to inspect this apartment.

A limit of 1 person per inspection applies together with mandatory mask wearing.

This modern, 60sqm Apartment features;

- Large bedroom with floor to ceiling built-in wardrobe
- Open-plan living and dining area flowing onto balcony
- Modern kitchen with stone benchtop and built-in appliances
- South-West facing balcony with access from living area

### More apartments available!

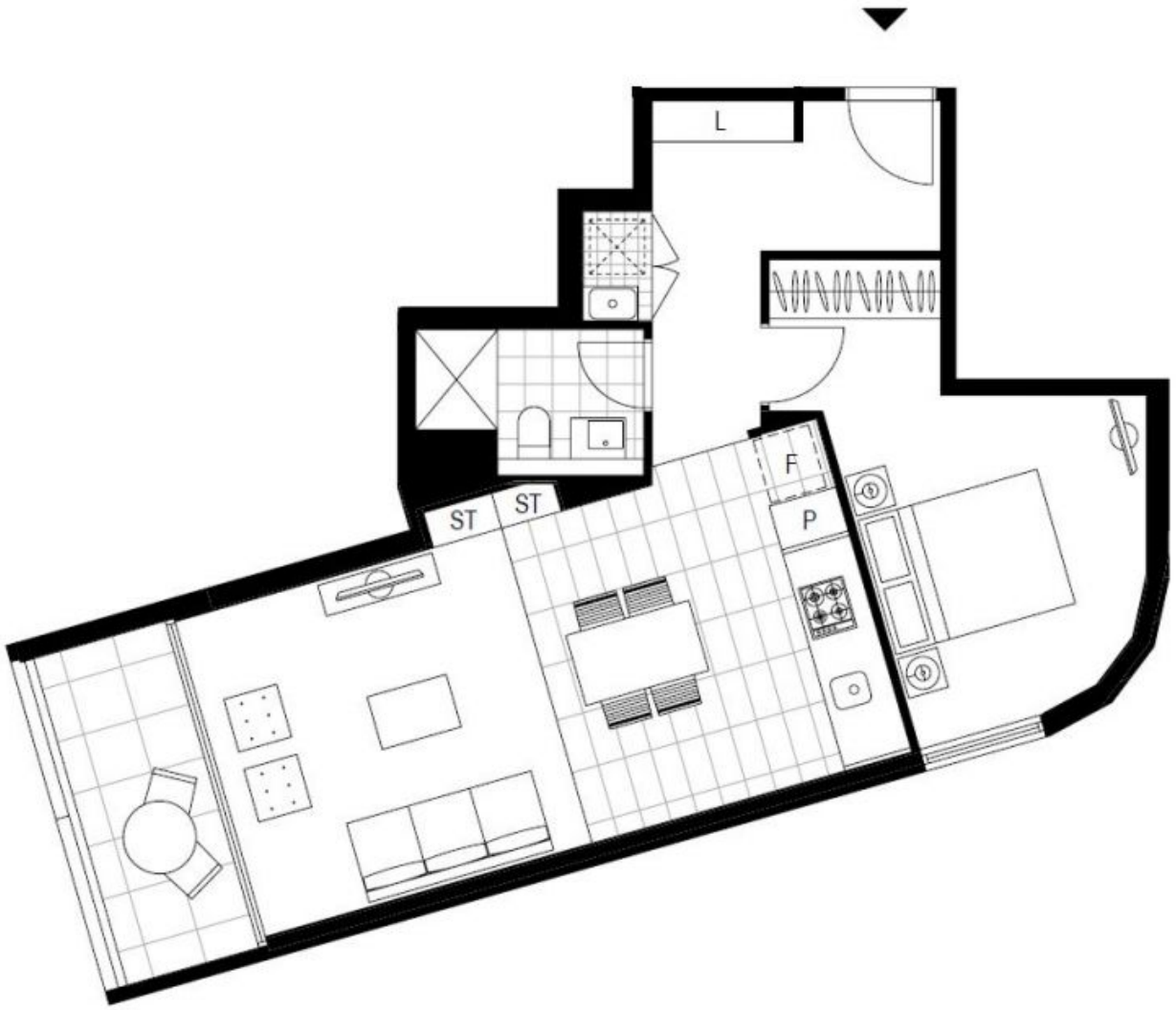
**Contact:** Carmen Whiteley  
02 8588 8888  
0497 555 519

**Type:** Apartment

**Date Available:** 01/07/2021

**Bond:** \$2060

<https://www.resbymirvac.com>



Plans shown are only indicative of layout. Dimensions are approximate.

**Zetland, NSW**  
202/6 Ebsworth Street