



**Glebe, NSW**  
309/172 Ross Street

**1**  
BED

**1**  
BATH



### Private Garden-Facing 1-Bedroom Apartment in Harold Park

This spacious 63sqm apartment features:

- Large bedroom with floor-to-ceiling built-in wardrobe
- Open-plan living and dining area, flowing onto garden facing balcony
- Contemporary kitchen with stone island benchtop and built-in Miele appliances
- Sleek bathroom with plenty of vanity storage
- Internal laundry with washing machine and dryer included
- Secure storage cage included
- Ducted A/C, video intercom and NBN connectivity
- 450m to the Heritage-listed Tramsheds, light rail and public transport

### DEPOSIT TAKEN

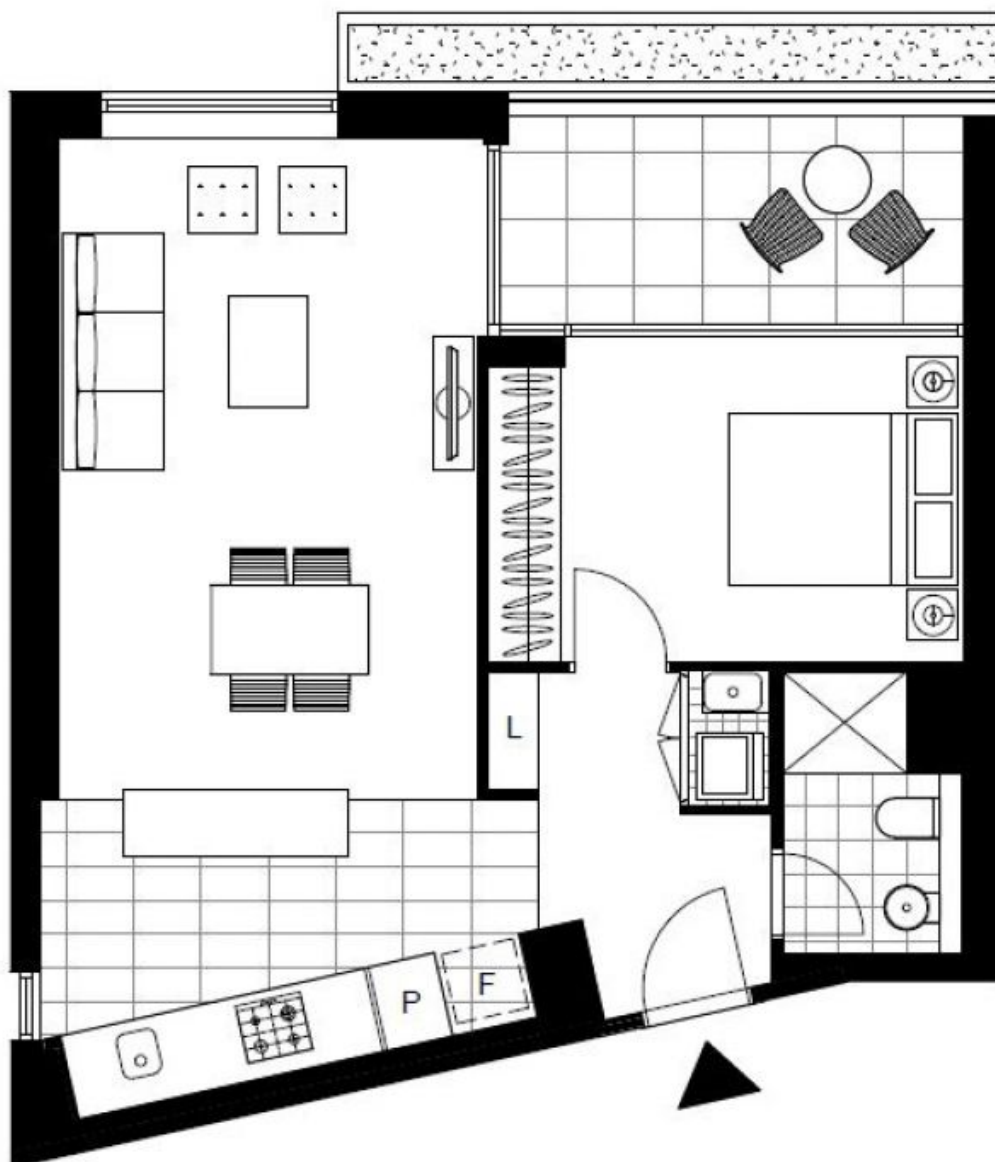
**Contact:** Naz Sabzpouri  
02 8588 8888  
0401 545 440

**Type:** Apartment

**Date Available:** 31/07/2021

**Bond:** \$2160

<https://www.resbymirvac.com>



Plans shown are only indicative of layout. Dimensions are approximate.

**Glebe, NSW**  
309/172 Ross Street