



## Zetland, NSW

406/6 Ebsworth Street

**2**  
BED

**1**  
BATH



### Bright 2-Bedroom Apartment in Green Square

This 82sqm, 2-Bedroom Apartment features:

- Spacious bedrooms with generous built-in wardrobes
- Open-plan living and dining area with access to the balcony
- Modern kitchen with stone benchtop and Smeg appliances
- Sleek bathroom with plenty of vanity storage
- Internal laundry with dryer included
- Secure storage cage included
- Ducted A/C, video intercom and NBN connectivity
- 300m to Woolworths, The Social Corner and Green Square Train Station (10mins to the City)

### Similar apartments available

**Contact:** Carmen Whiteley  
02 8588 8888  
0497 555 519

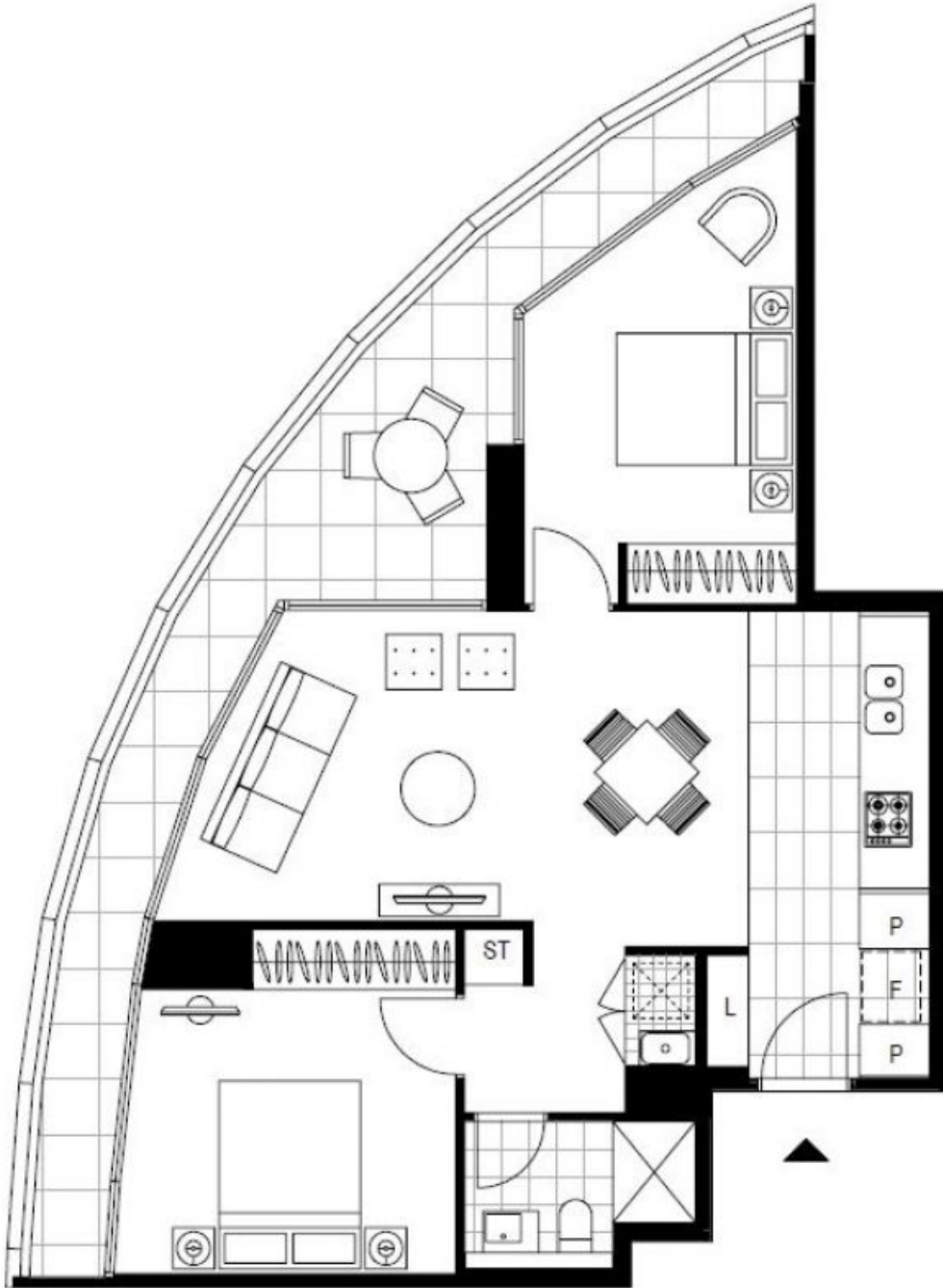
**Type:** Apartment

**Date Available:** 03/08/2021

**Bond:** \$2600

<https://www.resbymirvac.com>

For more information please contact Real Estate Services by Mirvac on 02 8588 8888 or email [enquiries@resbymirvac.com](mailto:enquiries@resbymirvac.com) - Your Onsite Agent!



Plans shown are only indicative of layout. Dimensions are approximate.

**Zetland, NSW**  
406/6 Ebsworth Street