



DOCKLANDS, VIC

2805/50 Lorimer Street

2 **2** **2** **RES**
BED BATH CAR

Yarra's Edge- Sunset marina views

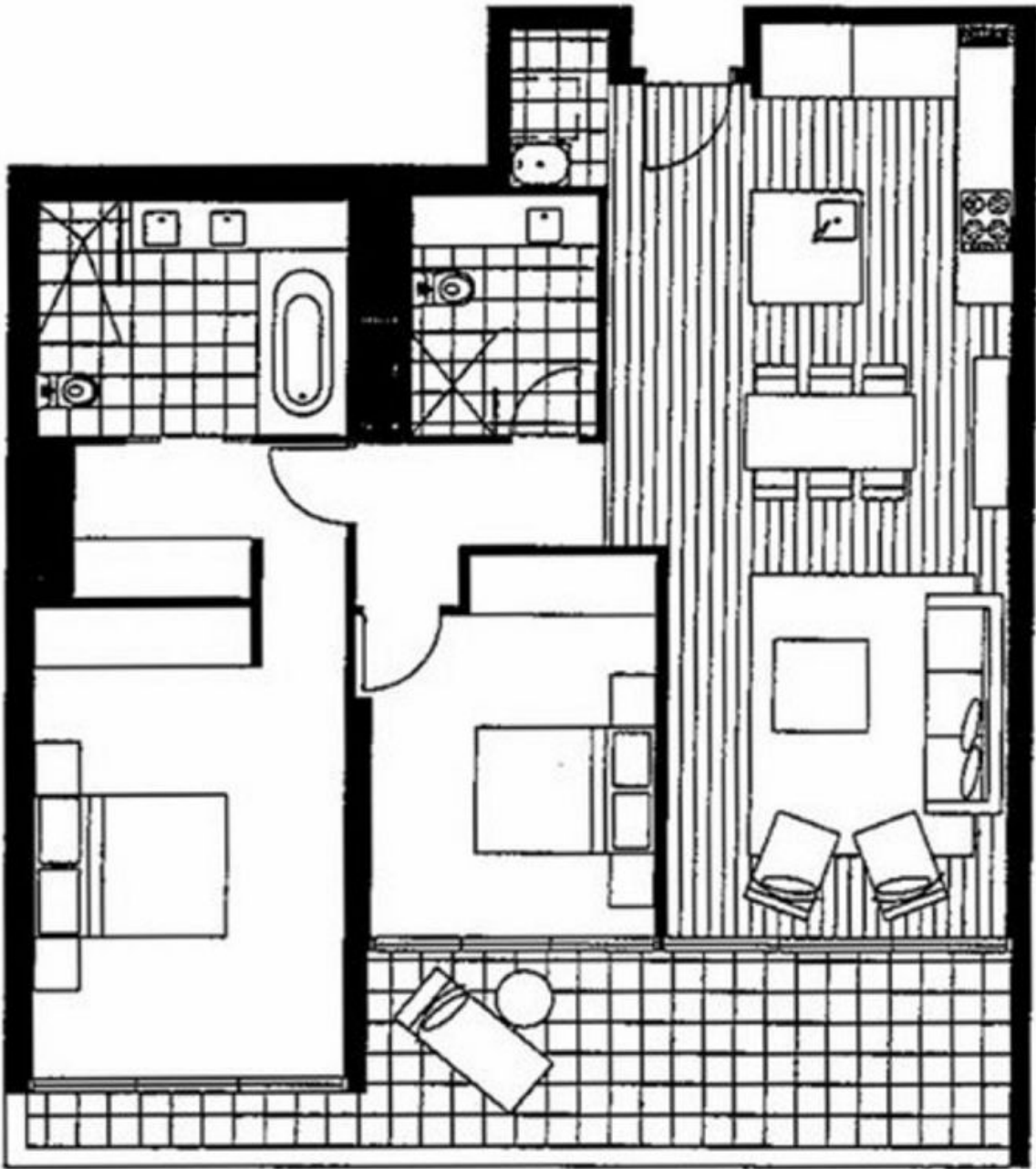
Located on the 28th floor, this spacious 2 bedroom, 2 bathroom apartment boasts breath taking views of Yarra's Edge and surrounds. This spectacular apartment offers;

- Open plan living and dining
- Breathtaking bay and marina views
- Generous cupboard space
- Integrated fridge
- Secure parking
- Island bench
- Generous balcony accessible via the living area and bedrooms
- BIR's to both bedrooms
- Spacious ensuite including bath

\$700 per week

Contact: Baden Lucas
03 9645 1199
0418 888 751
Aleisha Clark
03 9645 1199
0491 174 507

Type: Apartment
Date Available: 05/07/2021
Leased Date: 16/08/2021
Bond: \$3042
<https://www.resbymirvac.com>



Plans shown are only indicative of layout. Dimensions are approximate.

DOCKLANDS, VIC
2805/50 Lorimer Street