

## GLEBE, NSW

301/1 Cullen Close

**1**  
BED

**1**  
BATH



### Oversized Garden-Facing 1-Bedroom Apartment in Harold Park

This 62sqm, 3rd floor apartment features:

- Well-appointed bedroom with floor-to-ceiling built-in wardrobe
- Spacious open-plan living and dining area
- Sleek kitchen with stone benchtop and built-in Miele appliances
- Modern bathroom with plenty of generous storage
- North facing balcony, overlooking the internal gardens
- Internal laundry with dryer included
- Secure storage cage included
- Ducted A/C, video intercom and NBN connectivity
- 450m to the Heritage-listed Tramsheds, light rail and public transport

**\$540 per week**

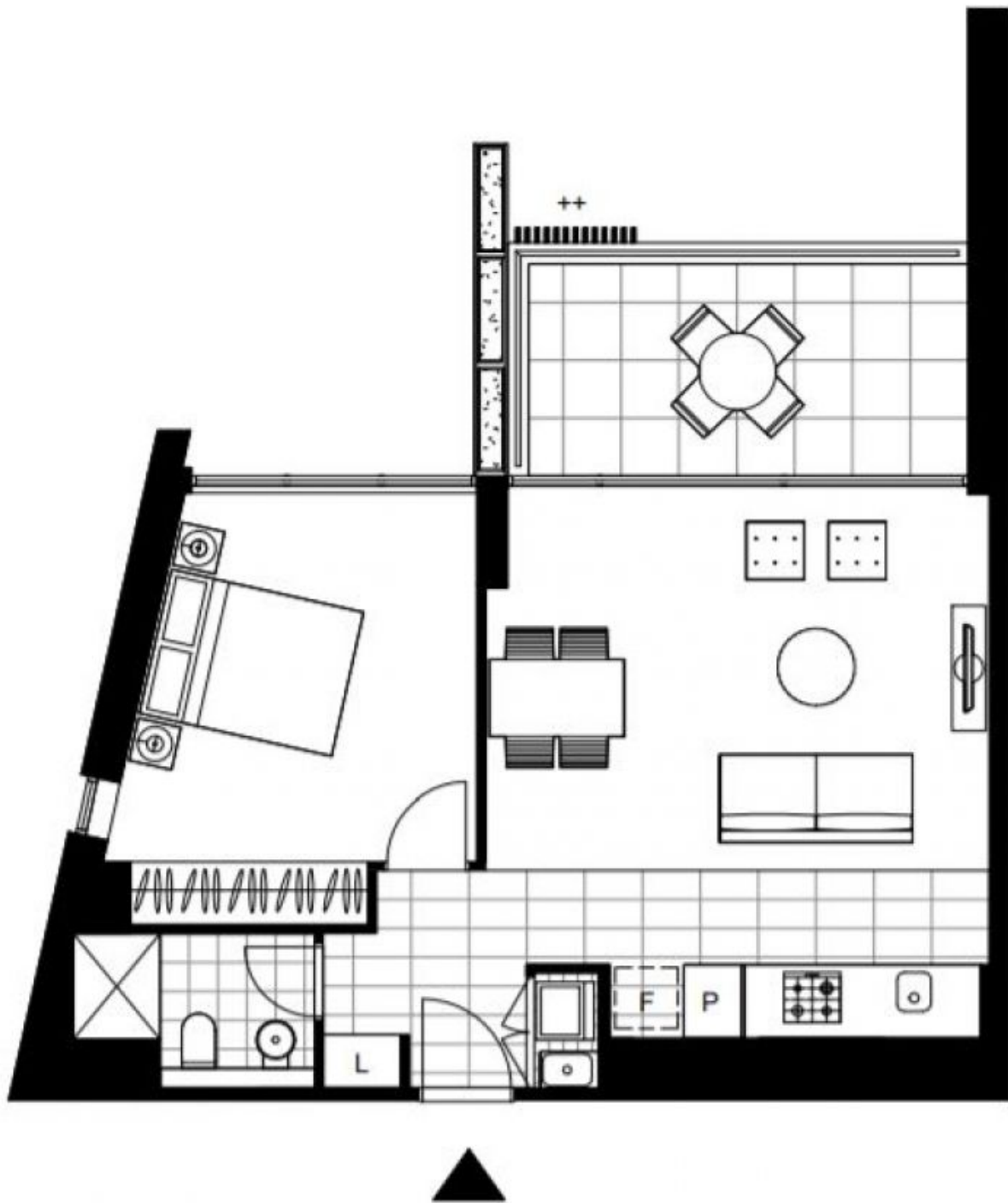
**Contact:** Naz Sabzpouri  
02 8588 8888  
0401 545 440

**Type:** Apartment

**Date Available:** 07/07/2021

**Bond:** \$2160

<https://www.resbymirvac.com>



Plans shown are only indicative of layout. Dimensions are approximate.

**GLEBE, NSW**  
301/1 Cullen Close